

XP-V730

Y (S,R)

XP-V737

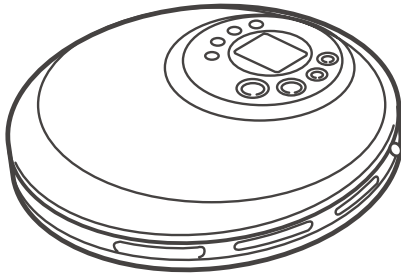
AEZ (S)

XP-V831

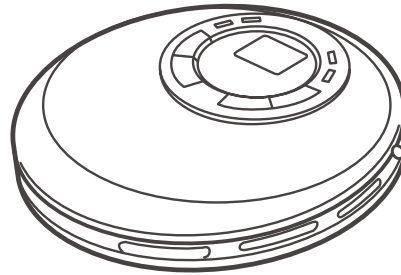
AEZ (GL,G,L,S), AK (S)

XP-V835

AEZ (B,L,S), AK (S)



<XP-V730,V737>



<XP-V831,V835>

SERVICE MANUAL

COMPACT DISC PLAYER

BASIC CD MECHANISM: KSM-780 ATA

aiwa

S/M Code No. 09-02A-454-2N7

DATA

SPECIFICATIONS -1/1

Tracking system	3-beam laser
Laser pickup	Semiconductor laser
D/A conversion	8-times oversampling digital filter + 1-bit DAC
Frequency response	20 - 20,000 Hz
Output	PHONES/LINE OUT jack (stereo mini-jack)
Maximum output	10 mW + 10 mW (16 ohms at 1 kHz) 500 mV (47 kohms at 1 kHz)
Power supply	DC 3 V using two size AA (LR6) alkaline batteries XP-V737, V835 only : DC 2.4 V using two supplied rechargeable batteries (Ni-Cd 1.2 V 700 mAh) XP-V730, V831 only : DC 2.4 V using two optional rechargeable batteries (Ni-Cd 1.2 V 700 mAh) XP-V730 only : AC house current using the optional AC adaptor Except XP-V730 : AC house current using the supplied AC adaptor
Maximum outside dimensions	132 (W) x 22 (H) x 145.8 (D) mm (XP-V730, V737) 132 (W) x 23 (H) x 145.8 (D) mm (XP-V831, V835) (excluding projecting parts and controls)
Weight	Approx. 200 g excluding batteries

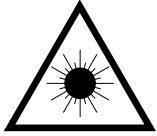
- Design and specifications are subject to change without notice.

PROTECTION OF EYES FROM LASER BEAM DURING SERVICING -1/1

This set employs laser. Therefore, be sure to follow carefully the instructions below when servicing.

WARNING!!

WHEN SERVICING, DO NOT APPROACH THE LASER EXIT WITH THE EYE TOO CLOSELY. IN CASE IT IS NECESSARY TO CONFIRM LASER BEAM EMISSION. BE SURE TO OBSERVE FROM A DISTANCE OF MORE THAN 30cm FROM THE SURFACE OF THE OBJECTIVE LENS ON THE OPTICAL PICK-UP BLOCK.



Caution: Invisible laser radiation when open and interlocks defeated avoid exposure to beam.

Advarsel: Usynlig laserstråling ved åbning, når sikkerhedsafbrydere er ude af funktion. Undgå udsættelse for stråling.

VAROITUS!

Laiteen Käyttäminen muulla kuin tässä käyttöohjeessa mainitulla tavalla saattaa altistaa käyttäjän turvallisuusluokan 1 ylittävälle näkymättömälle lasersäteilylle.

WARNING!

Om apparaten används på annat sätt än vad som specificeras i denna bruksanvisning, kan användaren utsättas för osynlig laserstrålning, som överskrider gränsen för laserklass 1.

CAUTION

Use of controls or adjustments or performance of procedures other than those specified herein may result in hazardous radiation exposure.

ATTENTION

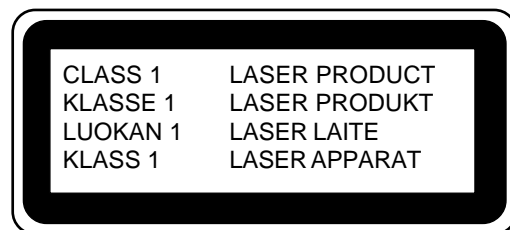
L'utilisation de commandes, réglages ou procédures autres que ceux spécifiés peut entraîner une dangereuse exposition aux radiations.

ADVARSEL

Usynlig laserstråling ved åbning, når sikkerhedsafbrydere er ude af funktion. Undgå udsættelse for stråling.

This Compact Disc player is classified as a CLASS 1 LASER product.

The CLASS 1 LASER PRODUCT label is located on the rear exterior.



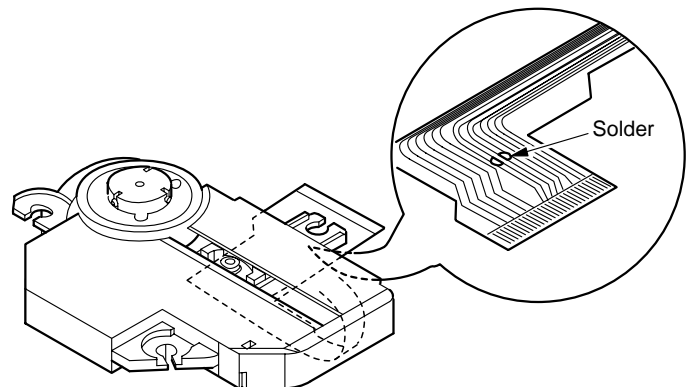
Precaution to replace Optical block

(KSM-780ATA)

Body or clothes electrostatic potential could ruin laser diode in the optical block. Be sure ground body and workbench, and use care the clothes do not touch the diode.

1) After the connection, remove solder shown in right figure.

CD PICK-UP Assy PWB



ACCESSORIES PARTS LIST -1/2

!

=

⚠

SAFTY PARTS

C

=

Components marked

All components used on this model at the production line are shown in this service manual.
However, please note that not all components will be available as spare parts for after-sales service.
Components marked S and O are designated as spare parts for service and will be stocked at the spare parts centers.
Components marked X and R are not designated as spare parts for after sales service, and will not be stocked at the spare parts centers.

UNIT-NAME	!	C	REF-NO	PARTS-NO	PARTS-NAME	SUFFIX&MODEL									
						XP-V730 Y1SC	XP-V730 Y1BRC	XP-V737 AEZ1SC	XP-V831 AEZ1SC	XP-V831 AEZ1LC	XP-V831 AEZ1GC	XP-V831 AEZ1BGLC	XP-V831 AK1SC	XP-V835 AEZ1SC	XP-V835 AEZ1LC
		O	AS1001	8C-HC7-945-010	IB (YZ,EGF)	a	b
		O	AS1001	8C-HC7-947-010	IB (YZ,PHC)	a	b
		O	AS1001	8C-HC7-946-010	IB (YZ,SID)	a	b
		O	AS1001	8C-HC7-935-010	IB (YZ,EGF)	.	.	c
		O	AS1001	8C-HC7-937-010	IB (YZ,PHC)	.	.	c
		O	AS1001	8C-HC7-936-010	IB (YZ,SID)	.	.	c
		O	AS1001	8C-HC7-915-010	IB (831,AEZ)	.	.	.	d	e	f	g	h	.	.
		O	AS1001	8C-HC7-916-010	IB (831,AEZ)	.	.	.	d	e	f	g	.	.	.
		O	AS1001	8C-HC7-917-010	IB (831,AEZ)	.	.	.	d	e	f	g	.	.	.
		O	AS1001	8C-HC7-925-010	IB (V835,AEZ/AK)	i	j
		O	AS1001	8C-HC7-926-010	IB (V835,AEZ/AK)	i	j
		O	AS1001	8C-HC7-927-010	IB (V835,AEZ/AK)	i	j
	!	O	AS1002	87-B30-283-110	AC ADAPTOR,230V-5.5V	.	.	c	d	e	f	g	.	i	j
	!	O	AS1002	87-B30-284-010	AC ADAPTOR,230V-5.5V	h	.	.
		O	AS1003	87-B30-541-010	HEADPHONE,HP-M070	a	b	c	i	j
		O	AS1003	87-B30-540-010	HEADPHONE,HP-M069	.	.	.	d	e	f	.	h	.	.
		O	AS1003	87-B30-540-110	HEADPHONE,HP-M069	g	.	.	.
		O	AS1004	8C-HC7-101-010	RC UNIT,RC-V831	.	.	.	d	e	f	.	h	i	j
		O	AS1004	8C-HC7-101-110	RC UNIT,RC-V831	g	.	.	.
		O	AS1005	87-B30-527-010	BAT,1.2V-700MA	.	.	c	i	j

ACCESSORIES PARTS LIST -2/2

! =  SAFETY PARTS

C = Components marked

All components used on this model at the production line are shown in this service manual.

However, please note that not all components will be available as spare parts for after-sales service.

Components marked S and O are designated as spare parts for service and will be stocked at the spare parts centers.

Components marked X and R are not designated as spare parts for after sales service, and will not be stocked at the spare parts centers.

UNIT-NAME	! C	REF-NO	PARTS-NO	PARTS-NAME	SUFFIX&MODEL	
					XP-V835 AEZ1BBC	XP-V835 AK1SC
		O AS1001	8C-HC7-945-010	IB (YZ,EGF)	.	.
		O AS1001	8C-HC7-947-010	IB (YZ,PHC)	.	.
		O AS1001	8C-HC7-946-010	IB (YZ,SID)	.	.
		O AS1001	8C-HC7-935-010	IB (YZ,EGF)	.	.
		O AS1001	8C-HC7-937-010	IB (YZ,PHC)	.	.
		O AS1001	8C-HC7-936-010	IB (YZ,SID)	.	.
		O AS1001	8C-HC7-915-010	IB (831,AEZ)	.	.
		O AS1001	8C-HC7-916-010	IB (831,AEZ)	.	.
		O AS1001	8C-HC7-917-010	IB (831,AEZ)	.	.
		O AS1001	8C-HC7-925-010	IB (V835,AEZ/AK)	k	l
		O AS1001	8C-HC7-926-010	IB (V835,AEZ/AK)	k	.
		O AS1001	8C-HC7-927-010	IB (V835,AEZ/AK)	k	.
	!	O AS1002	87-B30-283-110	AC ADAPTOR, 230V-5.5V	k	.
	!	O AS1002	87-B30-284-010	AC ADAPTOR, 230V-5.5V	.	l
		O AS1003	87-B30-541-010	HEADPHONE, HP-M070	.	.
		O AS1003	87-B30-540-010	HEADPHONE, HP-M069	k	l
		O AS1003	87-B30-540-110	HEADPHONE, HP-M069	.	.
		O AS1004	8C-HC7-101-010	RC UNIT,RC-V831	k	l
		O AS1004	8C-HC7-101-110	RC UNIT,RC-V831	.	.
		O AS1005	87-B30-527-010	BAT, 1.2V-700MA	k	l

SERVICE MODE -1/2

Automatic adjustment is repeated when starting TEST MODE. TEST MODE is operated after making it an initial-setting value.
A VOL+/-key becomes invalid.

It becomes invalid except the PLAY/PAUSE key at the time of an OFF display.

1. Starting Preparation and Release Method

(1) Short-circuit the short land for TEST MODE starting of MAIN C.B with solder. (Fig.1 reference)

(2) Supply a power supply and complete the preparation which starts TEST MODE.

* In TEST MODE, detection of OPEN/CLOSE SW is disregarded and always hold a CLOSE state.

(3) After TEST MODE release and TEST MODE use should surely remove the solder of a short land.

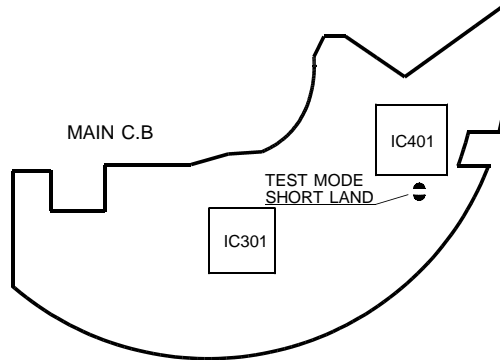


Fig.1 MAIN C.B

2. TEST MODE Starting

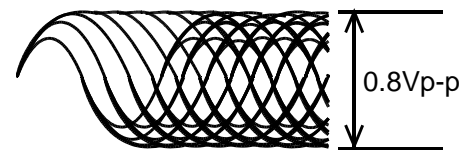
(1) TEST MODE starts by the PLAY/PAUSE key and shift to TOC lead operation.

When DISC is put in (CD-RW is unreproducible at the time of starting)

After TOC read completes, playback operation

(1 time fast playback) (Fig.2 reference)

* Other than TEST MODE 3 time fast playback.



0.2V/DIV, 500 μ s/DIV

Fig.2 IC501 9pin RF signal (CD-DA)

* When the DISC is not inserted, (inserting the DISC, when reading is not possible)

Err indication (Fig.3 reference)



Fig.3 Err indication

3. LCD all the light indications

Pushes the PLAY/PAUSE key, before being time or Err indication of playback state, the PLAY MODE key it is pushed by the fact that the LCD all the light indications. (Fig.4 reference)



Fig.4 LCD all the light indications

SERVICE MODE -2/2

4. ON/OFF laser change

The ON/OFF of the laser is changed to the degree which pushes the PLAY MODE key in STOP state or during Err indicating.



Fig.5 LCD indication in stop

5. Sled Sending Operation of Pickup

By the fact that it continues to push the FWD/RVS SKIP key in STOP state or during Err indicating the pickup it operates to the inside and outside lap.

FWD SKIP key: Peripheral direction

RVS SKIP key: Inside perimeter direction

6. Focusing search mode

TOC read after the completing, length pushes the DSL key in STOP state.

Focus search operation is 1 time and observation of a S character waveform is possible for it with an oscilloscope (IC501 23pin).

The servo gain change of the CD-DA/R and the CD-RW is effective.

As for LCD indicatory value there is no stipulation at such as amplitude value.



Fig.6 LCD indication at time of focusing search mode

7. CD-DA/R and CD-RW servo gain change

At the time of TEST MODE starting, the servo gain of CD-DA/R.

TOC read after the completing, change is possible in the degree which pushes the DSL key in STOP state. (Fig.7 reference)



Fig.7-1 CD DA/R



Fig.7-2 CD-RW

8. Tracking / sled servo ON/OFF change

The ON/OFF it can point to tracking / thread servo to the degree which pushes the ENTER key in the PLAY.

ELECTRICAL PARTS LIST -1/7

! =⚠SAFTY PARTS
C = Components marked
All components used on this model at the production line are shown in this service manual.
However, please note that not all components will be available as spare parts for after-sales service.
Components marked S and O are designated as spare parts for service and will be stocked at the spare parts centers.
Components marked X and R are not designated as spare parts for after sales service, and will not be stocked at the spare parts centers.

UNIT-NAME		! C	REF-NO	PARTS-NO	PARTS-NAME	SUFFIX&MODEL									
						XP-V730 Y1SC	XP-V730 Y1BRC	XP-V737 AEZ1SC	XP-V831 AEZ1SC	XP-V831 AEZ1LC	XP-V831 AEZ1GC	XP-V831 AEZ1BGLC	XP-V831 AK1SC	XP-V835 AEZ1SC	XP-V835 AEZ1LC
FLEX		O	A	0001	8C-HC7-602-010	FLEX PWB ASSY	a	b	c
FLEX		O	A	0001	8C-HC7-604-010	FLEX PWB ASSY	.	.	.	d	e	f	g	h	i
FLEX		O	LCD	0001	S0-090-230-000	LCD-P-06D-25x23.5SM&&P G9023	a	b	c	d	e	f	g	h	i
MAIN		O	C	0102	S1-101-002-5C0	CAP,E 100M-25V	a	b	c	d	e	f	g	h	i
MAIN		O	C	0201	SB-331-000-6C0	CAP,E 330M-6.3V	a	b	c	d	e	f	g	h	i
MAIN		X	C	0202	87-010-831-080	C-CAP,0.1-16V	a	b	c	d	e	f	g	h	i
MAIN		X	C	0203	87-010-831-080	C-CAP,0.1-16V	a	b	c	d	e	f	g	h	i
MAIN		X	C	0204	S5-105-820-100	C-CAP,1UF-10V	a	b	c	d	e	f	g	h	i
MAIN		X	C	0205	S5-105-820-100	C-CAP,1UF-10V	a	b	c	d	e	f	g	h	i
MAIN		X	C	0206	S5-105-820-100	C-CAP,1UF-10V	a	b	c	d	e	f	g	h	i
MAIN		O	C	0207	SB-680-000-4C0	CAP,E 68M-4V	a	b	c	d	e	f	g	h	i
MAIN		O	C	0208	87-010-501-080	CAP,E 47-4V	a	b	c	d	e	f	g	h	i
MAIN		X	C	0209	87-010-831-080	C-CAP,0.1-16V	a	b	c	d	e	f	g	h	i
MAIN		X	C	0210	S5-105-820-100	C-CAP,1UF-10V	a	b	c	d	e	f	g	h	i
MAIN		X	C	0211	S5-223-120-250	C-CAP,0.022UF-25V	a	b	c	d	e	f	g	h	i
MAIN		X	C	0212	87-010-305-080	C-CAP,470PF-50V	a	b	c	d	e	f	g	h	i
MAIN		O	C	0213	87-010-115-010	CAP,E 100-4V	a	b	c	d	e	f	g	h	i
MAIN		O	C	0214	87-010-501-080	CAP,E 47-4V	a	b	c	d	e	f	g	h	i
MAIN		X	C	0216	87-012-274-080	C-CAP,0.001UF-50V	a	b	c	d	e	f	g	h	i
MAIN		X	C	0217	S5-105-820-100	C-CAP,1UF-10V	a	b	c	d	e	f	g	h	i
						XP-V730 Y1SC	XP-V730 Y1BRC	XP-V737 AEZ1SC	XP-V831 AEZ1SC	XP-V831 AEZ1LC	XP-V831 AEZ1GC	XP-V831 AEZ1BGLC	XP-V831 AK1SC	XP-V835 AEZ1SC	XP-V835 AEZ1LC
MAIN		X	C	0218	87-A10-904-080	C-CAP,1-6.3V	a	b	c	d	e	f	g	h	i
MAIN		X	C	0219	87-010-831-080	C-CAP,0.1-16V	a	b	c	d	e	f	g	h	i
MAIN		X	C	0220	87-010-831-080	C-CAP,0.1-16V	a	b	c	d	e	f	g	h	i
MAIN		X	C	0221	87-010-831-080	C-CAP,0.1-16V	a	b	c	d	e	f	g	h	i
MAIN		X	C	0222	87-010-831-080	C-CAP,0.1-16V	a	b	c	d	e	f	g	h	i
MAIN		X	C	0301	S5-105-820-100	C-CAP,1UF-10V	a	b	c	d	e	f	g	h	i
MAIN		O	C	0303	87-A10-260-080	C-CAP,0.1-16	a	b	c	d	e	f	g	h	i
MAIN		X	C	0304	87-010-831-080	C-CAP,0.1-16V	a	b	c	d	e	f	g	h	i
MAIN		X	C	0305	87-012-286-080	C-CAP,0.01-25V	a	b	c	d	e	f	g	h	i
MAIN		X	C	0306	S6-150-520-500	C-CAP,15PF-50V	a	b	c	d	e	f	g	h	i
MAIN		X	C	0307	S6-180-520-500	C-CAP,18PF-50V	a	b	c	d	e	f	g	h	i
MAIN		X	C	0308	S5-222-120-500	C-CAP,0.0022UF-50V	a	b	c	d	e	f	g	h	i
MAIN		X	C	0309	S5-222-120-500	C-CAP,0.0022UF-50V	a	b	c	d	e	f	g	h	i
MAIN		X	C	0310	S6-101-520-500	C-CAP,100PF-50V	a	b	c	d	e	f	g	h	i
MAIN		X	C	0311	87-012-274-080	C-CAP,0.001UF-50V	a	b	c	d	e	f	g	h	i
MAIN		X	C	0312	87-012-274-080	C-CAP,0.001UF-50V	a	b	c	d	e	f	g	h	i
MAIN		X	C	0313	87-012-274-080	C-CAP,0.001UF-50V	a	b	c	d	e	f	g	h	i
MAIN		O	C	0401	87-015-908-010	CAP,E 220-4V	a	b	c	d	e	f	g	h	i
MAIN		X	C	0402	87-010-831-080	C-CAP,0.1-16V	a	b	c	d	e	f	g	h	i
MAIN		O	C	0403	87-015-908-010	CAP,E 220-4V	a	b	c	d	e	f	g	h	i
						XP-V730 Y1SC	XP-V730 Y1BRC	XP-V737 AEZ1SC	XP-V831 AEZ1SC	XP-V831 AEZ1LC	XP-V831 AEZ1GC	XP-V831 AEZ1BGLC	XP-V831 AK1SC	XP-V835 AEZ1SC	XP-V835 AEZ1LC
MAIN		X	C	0404	87-010-831-080	C-CAP,0.1-16V	a	b	c	d	e	f	g	h	i
MAIN		O	C	0405	87-A10-260-080	C-CAP,0.1-16	a	b	c	d	e	f	g	h	i
MAIN		X	C	0406	S5-561-120-500	C-CAP,560PF-50V	a	b	c	d	e	f	g	h	i
MAIN		X	C	0407	S5-223-120-250	C-CAP,0.022UF-25V	a	b	c	d	e	f	g	h	i
MAIN		O	C	0408	87-A10-260-080	C-CAP,0.1-16	a	b	c	d	e	f	g	h	i
MAIN		X	C	0409	S5-474-120-100	C-CAP,0.47-10V	a	b	c	d	e	f	g	h	i
MAIN		X	C	0410	87-012-286-080	C-CAP,0.01-25V	a	b	c	d	e	f	g	h	i
MAIN		X	C	0411	S5-105-820-100	C-CAP,1UF-10V	a	b	c	d	e	f	g	h	i
MAIN		O	C	0412	87-010-115-010	CAP,E 100-4V	a	b	c	d	e	f	g	h	i
MAIN		X	C	0413	87-010-831-080	C-CAP,0.1-16V	a	b	c	d	e	f	g	h	i
MAIN		X	C	0414	88-108-000-080	C-RES,0 -1/16W	a	b	c	d	e	f	g	h	i
MAIN		O	C	0415	87-A10-260-080	C-CAP,0.1-16	a	b	c	d	e	f	g	h	i
MAIN		X	C	0416	87-010-831-080	C-CAP,0.1-16V	a	b	c	d	e	f	g	h	i
MAIN		X	C	0421	87-010-831-080	C-CAP,0.1-16V	a	b	c	d	e	f	g	h	i
MAIN		X	C	0422	S5-105-820-100	C-CAP,1UF-10V	a	b	c	d	e	f	g	h	i
MAIN		X	C	0423	87-010-831-080	C-CAP,0.1-16V	a	b	c	d	e	f	g	h	i
MAIN		X	C	0424	87-010-831-080	C-CAP,0.1-16V	a	b	c	d	e	f	g	h	i
MAIN		O	C	0501	87-010-115-010	CAP,E 100-4V	a	b	c	d	e	f	g	h	i
MAIN		X	C	0503	S5-223-120-250	C-CAP,0.022UF-25V	a	b	c	d	e	f	g	h	i
MAIN		O	C	0504	87-A10-260-080	C-CAP,0.1-16	a	b	c	d	e	f	g	h	i
						XP-V730 Y1SC	XP-V730 Y1BRC	XP-V737 AEZ1SC	XP-V831 AEZ1SC	XP-V831 AEZ1LC	XP-V831 AEZ1GC	XP-V831 AEZ1BGLC	XP-V831 AK1SC	XP-V835 AEZ1SC	XP-V835 AEZ1LC
MAIN		X	C	0505	S5-561-120-500	C-CAP,560PF-50V	a	b	c	d	e	f	g	h	i
MAIN		X	C	0506	S6-820-520-500	C-CAP,82PF-50V	a	b	c	d	e	f	g	h	i
MAIN		X	C	0507	87-010-305-080	C-CAP,470PF-50V	a	b	c	d	e	f	g	h	i
MAIN		O	C	0508	87-010-501-080	CAP,E 47-4V	a	b	c	d	e	f	g	h	i
MAIN		X	C	0509	S5-272-120-500	C-CAP,0.0027-50V	a	b	c	d	e	f	g	h	i
MAIN		X	C	0510	S5-272-120-500	C-CAP,0.0027-50V	a	b	c	d	e	f	g	h	i
MAIN		X	C	0511	S5-223-120-250	C-CAP,0.022UF-25V	a	b	c	d	e	f	g	h	i
MAIN		X	C	0513	S5-223-120-250	C-CAP,0.022UF-25V	a	b	c	d	e	f	g	h	i
MAIN		O	C	0514	87-A10-260-080	C-CAP,0.1-16	a	b	c	d	e	f	g	h	i
MAIN		O	C	0515	87-A10-260-080	C-CAP,0.1-16	a	b	c	d	e	f	g	h	i
MAIN		X	C	0516	S6-100-420-500	C-CAP,10P-50V	a	b	c	d	e	f	g	h	i
MAIN		X	C	0517	S6-330-520-500	C-CAP,33PF-50V	a	b	c	d	e	f	g	h	i
MAIN		O	C	0520	87-010-501-080	CAP,E 47-4V	a	b	c	d	e	f	g	h	i
MAIN		X	C	0521	87-012-274-080	C-CAP,0.001UF-50V	a	b	c	d	e	f	g	h	i
MAIN		X	C	0522	S5-105-820-100	C-CAP,1UF-10V	a	b	c	d	e	f	g	h	i
MAIN		X	C	0523	S5-105-820-100	C-CAP,1UF-10V	a	b	c	d	e	f	g	h	i
MAIN		O	C	0701	87-015-908-010	CAP,E 220-4V	a	b							

ELECTRICAL PARTS LIST - 2/7

! = SAFETY PARTS

C = Components marked

All components used on this model at the production line are shown in this service manual.

However, please note that not all components will be available as spare parts for after-sales service.

Components marked S and O are designated as spare parts for service and will be stocked at the spare parts centers.

Components marked X and R are not designated as spare parts for after sales service, and will not be stocked at the spare parts centers.

UNIT-NAME	! C	REF-NO	PARTS-NO	PARTS-NAME	SUFFIX&MODEL	
					XP-V835 AEZ1BBC	XP-V835 AK1SC
FLEX	O A	0001	8C-HC7-602-010	FLEX PWB ASSY	.	.
FLEX	O A	0001	8C-HC7-604-010	FLEX PWB ASSY	k	1
FLEX	O	LCD0001	S0-090-230-000	LCD-P-06D-25x23.5SM&&&P G9023	k	1
MAIN	O C	0102	S1-101-002-5C0	CAP,E 100M-25V	k	1
MAIN	O C	0201	SB-331-000-6C0	CAP,E 330M-6.3V	k	1
MAIN	X C	0202	87-010-831-080	C-CAP,0.1-16V	k	1
MAIN	X C	0203	87-010-831-080	C-CAP,0.1-16V	k	1
MAIN	X C	0204	S5-105-820-100	C-CAP,1UF-10V	k	1
MAIN	X C	0205	S5-105-820-100	C-CAP,1UF-10V	k	1
MAIN	X C	0206	S5-105-820-100	C-CAP,1UF-10V	k	1
MAIN	O C	0207	SB-680-000-4C0	CAP,E 68M-4V	k	1
MAIN	O C	0208	87-010-501-080	CAP,E 47-4V	k	1
MAIN	X C	0209	87-010-831-080	C-CAP,0.1-16V	k	1
MAIN	X C	0210	S5-105-820-100	C-CAP,1UF-10V	k	1
MAIN	X C	0211	S5-223-120-250	C-CAP,0.022UF-25V	k	1
MAIN	X C	0212	87-010-305-080	C-CAP,470PF-50V	k	1
MAIN	O C	0213	87-010-115-010	CAP,E 100-4V	k	1
MAIN	O C	0214	87-010-501-080	CAP,E 47-4V	k	1
MAIN	X C	0216	87-012-274-080	C-CAP,0.001UF-50V	k	1
MAIN	X C	0217	S5-105-820-100	C-CAP,1UF-10V	k	1
					XP-V835 AEZ1BBC	XP-V835 AK1SC
MAIN	X C	0218	87-A10-904-080	C-CAP,1-6.3V	k	1
MAIN	X C	0219	87-010-831-080	C-CAP,0.1-16V	k	1
MAIN	X C	0220	87-010-831-080	C-CAP,0.1-16V	k	1
MAIN	X C	0221	87-010-831-080	C-CAP,0.1-16V	k	1
MAIN	X C	0222	87-010-831-080	C-CAP,0.1-16V	k	1
MAIN	X C	0301	S5-105-820-100	C-CAP,1UF-10V	k	1
MAIN	O C	0303	87-A10-260-080	C-CAP,0.1-16	k	1
MAIN	X C	0304	87-010-831-080	C-CAP,0.1-16V	k	1
MAIN	X C	0305	87-012-286-080	C-CAP,0.01-25V	k	1
MAIN	X C	0306	S6-150-520-500	C-CAP,15PF-50V	k	1
MAIN	X C	0307	S6-180-520-500	C-CAP,18PF-50V	k	1
MAIN	X C	0308	S5-222-120-500	C-CAP,0.0022UF-50V	k	1
MAIN	X C	0309	S5-222-120-500	C-CAP,0.0022UF-50V	k	1
MAIN	X C	0310	S6-101-520-500	C-CAP,100PF-50V	k	1
MAIN	X C	0311	87-012-274-080	C-CAP,0.001UF-50V	k	1
MAIN	X C	0312	87-012-274-080	C-CAP,0.001UF-50V	k	1
MAIN	X C	0313	87-012-274-080	C-CAP,0.001UF-50V	k	1
MAIN	O C	0401	87-015-908-010	CAP,E 220-4V	k	1
MAIN	X C	0402	87-010-831-080	C-CAP,0.1-16V	k	1
MAIN	O C	0403	87-015-908-010	CAP,E 220-4V	k	1
					XP-V835 AEZ1BBC	XP-V835 AK1SC
MAIN	X C	0404	87-010-831-080	C-CAP,0.1-16V	k	1
MAIN	O C	0405	87-A10-260-080	C-CAP,0.1-16	k	1
MAIN	X C	0406	S5-561-120-500	C-CAP,560PF-50V	k	1
MAIN	X C	0407	S5-223-120-250	C-CAP,0.022UF-25V	k	1
MAIN	O C	0408	87-A10-260-080	C-CAP,0.1-16	k	1
MAIN	X C	0409	S5-474-120-100	C-CAP,0.47-10V	k	1
MAIN	X C	0410	87-012-286-080	C-CAP,0.01-25V	k	1
MAIN	X C	0411	S5-105-820-100	C-CAP,1UF-10V	k	1
MAIN	O C	0412	87-010-115-010	CAP,E 100-4V	k	1
MAIN	X C	0413	87-010-831-080	C-CAP,0.1-16V	k	1
MAIN	X C	0414	88-108-000-080	C-RES,0 -1/16W	k	1
MAIN	O C	0415	87-A10-260-080	C-CAP,0.1-16	k	1
MAIN	X C	0416	87-010-831-080	C-CAP,0.1-16V	k	1
MAIN	X C	0421	87-010-831-080	C-CAP,0.1-16V	k	1
MAIN	X C	0422	S5-105-820-100	C-CAP,1UF-10V	k	1
MAIN	X C	0423	87-010-831-080	C-CAP,0.1-16V	k	1
MAIN	X C	0424	87-010-831-080	C-CAP,0.1-16V	k	1
MAIN	O C	0501	87-010-115-010	CAP,E 100-4V	k	1
MAIN	X C	0503	S5-223-120-250	C-CAP,0.022UF-25V	k	1
MAIN	O C	0504	87-A10-260-080	C-CAP,0.1-16	k	1
					XP-V835 AEZ1BBC	XP-V835 AK1SC
MAIN	X C	0505	S5-561-120-500	C-CAP,560PF-50V	k	1
MAIN	X C	0506	S6-820-520-500	C-CAP,82PF-50V	k	1
MAIN	X C	0507	87-010-305-080	C-CAP,470PF-50V	k	1
MAIN	O C	0508	87-010-501-080	CAP,E 47-4V	k	1
MAIN	X C	0509	S5-272-120-500	C-CAP,0.0027-50V	k	1
MAIN	X C	0510	S5-272-120-500	C-CAP,0.0027-50V	k	1
MAIN	X C	0511	S5-223-120-250	C-CAP,0.022UF-25V	k	1
MAIN	X C	0513	S5-223-120-250	C-CAP,0.022UF-25V	k	1
MAIN	O C	0514	87-A10-260-080	C-CAP,0.1-16	k	1
MAIN	O C	0515	87-A10-260-080	C-CAP,0.1-16	k	1
MAIN	X C	0516	S6-100-420-500	C-CAP,10P-50V	k	1
MAIN	X C	0517	S6-330-520-500	C-CAP,33PF-50V	k	1
MAIN	O C	0520	87-010-501-080	CAP,E 47-4V	k	1
MAIN	X C	0521	87-012-274-080	C-CAP,0.001UF-50V	k	1
MAIN	X C	0522	S5-105-820-100	C-CAP,1UF-10V	k	1
MAIN	X C	0523	S5-105-820-100	C-CAP,1UF-10V	k	1
MAIN	O C	0701	87-015-908-010	CAP,E 220-4V	k	1
MAIN	X C	0702	87-012-286-080	C-CAP,0.01-25V	k	1
MAIN	X C	0703	S6-331-520-500	C-CAP,330PF-50V	k	1
MAIN	X C	0704	S6-331-520-500	C-CAP,330PF-50V	k	1

ELECTRICAL PARTS LIST -3/7

! =⚠ SAFTY PARTS
C = Components marked
All components used on this model at the production line are shown in this service manual.
However, please note that not all components will be available as spare parts for after-sales service.
Components marked S and O are designated as spare parts for service and will be stocked at the spare parts centers.
Components marked X and R are not designated as spare parts for after sales service, and will not be stocked at the spare parts centers.

UNIT-NAME		C	REF-NO	PARTS-NO	PARTS-NAME	SUFFIX&MODEL										
						XP-V730 Y1SC	XP-V730 Y1BRC	XP-V737 AEZ1SC	XP-V831 AEZ1SC	XP-V831 AEZ1LC	XP-V831 AEZ1GC	XP-V831 AEZ1BGLC	XP-V831 AK1SC	XP-V835 AEZ1SC	XP-V835 AEZ1LC	
MAIN		X	C	0705	S3-823-520-160	C-RES,82K-1/16W	a	b	c	d	e	f	g	h	i	j
MAIN		X	C	0706	S3-823-520-160	C-RES,82K-1/16W	a	b	c	d	e	f	g	h	i	j
MAIN		X	C	0707	S5-105-820-100	C-CAP,1UF-10V	a	b	c	d	e	f	g	h	i	j
MAIN		X	C	0708	S5-105-820-100	C-CAP,1UF-10V	a	b	c	d	e	f	g	h	i	j
MAIN		O	C	0709	87-A10-260-080	C-CAP,0.1-16	a	b	c	d	e	f	g	h	i	j
MAIN		O	C	0710	87-010-501-080	CAP,E 47-4V	a	b	c	d	e	f	g	h	i	j
MAIN		O	C	0717	87-015-908-010	CAP,E 220-4V	a	b	c	d	e	f	g	h	i	j
MAIN		O	C	0718	87-015-908-010	CAP,E 220-4V	a	b	c	d	e	f	g	h	i	j
MAIN		X	C	0719	87-012-274-080	C-CAP,0.001UF-50V	a	b	c	d	e	f	g	h	i	j
MAIN		X	C	0720	87-012-274-080	C-CAP,0.001UF-50V	a	b	c	d	e	f	g	h	i	j
MAIN		X	C	0721	S5-272-120-500	C-CAP,0.0027-50V	a	b	c	d	e	f	g	h	i	j
MAIN		X	C	0722	S5-272-120-500	C-CAP,0.0027-50V	a	b	c	d	e	f	g	h	i	j
MAIN		X	C	0796	S6-100-420-500	C-CAP,10P-50V	a	b	c	d	e	f	g	h	i	j
MAIN		X	C	0797	S6-100-420-500	C-CAP,10P-50V	a	b	c	d	e	f	g	h	i	j
MAIN		X	C	0798	S6-331-520-500	C-CAP,330PF-50V	a	b	c	d	e	f	g	h	i	j
MAIN		X	C	0799	S6-331-520-500	C-CAP,330PF-50V	a	b	c	d	e	f	g	h	i	j
MAIN		O	CN	0301	87-A60-756-080	C-CONNECTOR JST PITCH:0.5mm V	a	b	c	d	e	f	g	h	i	j
MAIN		O	CN	0501	87-A60-424-010	FFC CONN,16P P=1MM	a	b	c	d	e	f	g	h	i	j
MAIN		O	CN	0601	87-009-411-010	CONN,6P V	a	b	c	d	e	f	g	h	i	j
MAIN		S	D	0101	87-A41-128-040	DIODE,MC2850	a	b	c	d	e	f	g	h	i	j
MAIN		S	D	0102	87-A40-554-040	C-DIODE,RB491D	a	b	c	d	e	f	g	h	i	j
MAIN		S	D	0201	87-A40-196-080	ZENER,UDZ6.2B	a	b	c	d	e	f	g	h	i	j
MAIN		S	D	0406	87-A41-127-040	DIODE,MC2848	a	b	c	d	e	f	g	h	i	j
MAIN		X	FB	0711	88-108-102-080	C-RES,1K-1/16	a	b	c	d	e	f	g	h	i	j
MAIN		X	FB	0712	88-108-000-080	C-RES,0 -1/16W	a	b	c	d	e	f	g	h	i	j
MAIN		X	FB	0713	88-108-000-080	C-RES,0 -1/16W	a	b	c	d	e	f	g	h	i	j
MAIN		X	FB	0714	88-108-000-080	C-RES,0 -1/16W	a	b	c	d	e	f	g	h	i	j
MAIN		S	IC	0201	87-A22-162-030	IC,BH6570KV	a	b	c	d	e	f	g	h	i	j
MAIN		S	IC	0301	8C-HC7-611-030	IC,MN101C439-AR	a	b	c	d	e	f	g	h	i	j
MAIN		S	IC	0302	S1-434-220-000	IC,PST3422UL	a	b	c	d	e	f	g	h	i	j
MAIN		S	IC	0401	87-A22-226-030	IC,MN662786SBM	a	b	c	d	e	f	g	h	i	j
MAIN		S	IC	0451	87-A21-939-010	IC,GLT4160M04 (G-LI	a	b	c	d	e	f	g	h	i	j
MAIN		S	IC	0501	87-A21-873-040	IC,AN8399SA-E1	a	b	c	d	e	f	g	h	i	j
MAIN		S	IC	0701	87-A22-163-040	IC,NJM2772V	a	b	c	d	e	f	g	h	i	j
MAIN		O	J	0101	87-A61-340-010	POWER DC JACK TC18-099-01	a	b	c	d	e	f	g	h	i	j
MAIN		O	J	0702	87-A61-339-010	JACK,3.5	a	b	c	d	e	f	g	h	i	j
MAIN		O	L	0201	87-A50-759-080	C-COIL,330U LB2518T33	a	b	c	d	e	f	g	h	i	j
MAIN		O	L	0202	87-A50-769-010	COIL,100U	a	b	c	d	e	f	g	h	i	j
MAIN		O	L	0203	87-A50-759-080	C-COIL,330U LB2518T33	a	b	c	d	e	f	g	h	i	j
MAIN		O	L	0204	87-A50-758-080	C-COIL,100U LB2518T10	a	b	c	d	e	f	g	h	i	j
MAIN		O	L	0401	87-A50-758-080	C-COIL,100U LB2518T10	a	b	c	d	e	f	g	h	i	j
MAIN		O	L	0501	87-A50-759-080	C-COIL,330U LB2518T33	a	b	c	d	e	f	g	h	i	j
MAIN		S	Q	0101	87-A30-681-040	TR,2SC4154	a	b	c	d	e	f	g	h	i	j
MAIN		S	Q	0102	SA-001-14K-000	C-TR,DTA114YUA	a	b	c	d	e	f	g	h	i	j
MAIN		S	Q	0104	87-A30-679-040	TR,2SC5810	a	b	c	d	e	f	g	h	i	j
MAIN		S	Q	0201	87-A30-678-040	TR,2SA2070	a	b	c	d	e	f	g	h	i	j
MAIN		S	Q	0204	87-A30-681-040	TR,2SC4154	a	b	c	d	e	f	g	h	i	j
MAIN		S	Q	0211	87-A30-681-040	TR,2SC4154	a	b	c	d	e	f	g	h	i	j
MAIN		S	Q	0501	SA-001-14Q-000	TR,DTC114TUA	a	b	c	d	e	f	g	h	i	j
MAIN		S	Q	0504	SA-001-14K-000	C-TR,DTA114YUA	a	b	c	d	e	f	g	h	i	j
MAIN		S	Q	0510	SA-016-890-000	C-TR,2SB1689	a	b	c	d	e	f	g	h	i	j
MAIN		S	Q	0701	87-A30-386-040	C-TR,DTA114TUA	a	b	c	d	e	f	g	h	i	j
MAIN		X	R	0101	S3-182-520-160	C-RES,1.8K-1/16W	a	b	c	d	e	f	g	h	i	j
MAIN		X	R	0102	88-108-473-080	C-RES,47K-1/16W	a	b	c	d	e	f	g	h	i	j
MAIN		X	R	0103	S3-688-510-180	C-RES,6.8-1/8	a	b	c	d	e	f	g	h	i	j
MAIN		X	R	0105	S3-398-540-140	C-RES,3.9-1/4	a	b	c	d	e	f	g	h	i	j
MAIN		X	R	0106	S3-561-520-160	C-RES,560-1/16W	a	b	c	d	e	f	g	h	i	j
MAIN		X	R	0202	S3-100-520-160	C-RES,10-1/16W	a	b	c	d	e	f	g	h	i	j
MAIN		X	R	0203	S3-220-520-160	C-RES,22-1/16W	a	b	c	d	e	f	g	h	i	j
MAIN		X	R	0210	88-108-103-080	C-RES,10K-1/1	a	b	c	d	e	f	g	h	i	j
MAIN		X	R	0211	88-108-102-080	C-RES,1K-1/16	a	b	c	d	e	f	g	h	i	j
MAIN		X	R	0217	88-108-102-080	C-RES,1K-1/16	a	b	c	d	e	f	g	h	i	j
MAIN		X	R	0218	S3-470-520-160	C-RES,47-1/16W	a	b	c	d	e	f	g	h	i	j
MAIN		X	R	0221	88-108-104-080	C-RES,100K-1/	a	b	c	d	e	f	g	h	i	j
MAIN		X	R	0222	88-108-104-080	C-RES,100K-1/	a	b	c	d	e	f	g	h	i	j
MAIN		X	R	0223	88-108-104-080	C-RES,100K-1/	a	b	c	d	e	f	g	h	i	j
MAIN		X	R	0224	88-108-104-080	C-RES,100K-1/	a	b	c	d	e	f	g	h	i	j
MAIN		X	R	0225	88-108-104-080	C-RES,100K-1/	a	b	c	d	e	f	g	h	i	j
MAIN		X	R	0226	88-108-104-080	C-RES,100K-1/	a	b	c	d	e	f	g	h	i	j
MAIN		X	R	0227	88-108-104-080	C-RES,100K-1/	a	b	c	d	e	f	g	h	i	j
MAIN		X	R	0301	S3-274-520-160	C-RES,270K-1/16W	a	b	c	d	e	f	g	h	i	j
MAIN		X	R	0302	88-108-473-080	C-RES,47K-1/16W	a	b	c	d	e	f	g	h	i	j
MAIN		X	R	0303	88-108-103-080	C-RES,10K-1/1	a	b	c	d	e	f	g	h	i	j
MAIN		X	R	0304	S3-223-520-160	C-RES,22K-1/16W	a	b	c	d	e	f	g	h	i	j
MAIN		X	R	0306	88-108-104-080	C-RES,100K-1/	a	b	c	d	e	f	g	h	i	j
MAIN		X	R	0307	88-108-154-080	C-RES,150K-1/16W	a	b	c	d	e	f	g	h	i	j
MAIN		X	R	0309	88-108-104-080	C-RES,100K-1/	a	b	c	d	e	f	g	h	i	j
MAIN		X	R	0310	88-108-103-080	C-RES,10K-1/1	a	b	c	d	e	f	g	h	i	j
MAIN		X	R	0311	88-108-103-080	C-RES,10K-1/1	a	b	c	d	e	f	g	h	i	j

ELECTRICAL PARTS LIST - 4/7

! = SAFETY PARTS

C = Components marked

All components used on this model at the production line are shown in this service manual.

However, please note that not all components will be available as spare parts for after-sales service.

Components marked S and O are designated as spare parts for service and will be stocked at the spare parts centers.

Components marked X and R are not designated as spare parts for after sales service, and will not be stocked at the spare parts centers.

UNIT-NAME	! C	REF-NO	PARTS-NO	PARTS-NAME	SUFFIX&MODEL	
					XP-V835 AEZ1BBC	XP-V835 AK1SC
MAIN	X C	0705	S3-823-520-160	C-RES,82K-1/16W	k	1
MAIN	X C	0706	S3-823-520-160	C-RES,82K-1/16W	k	1
MAIN	X C	0707	S5-105-820-100	C-CAP,1UF-10V	k	1
MAIN	X C	0708	S5-105-820-100	C-CAP,1UF-10V	k	1
MAIN	O C	0709	87-A10-260-080	C-CAP,0.1-16	k	1
MAIN	O C	0710	87-010-501-080	CAP,E 47-4V	k	1
MAIN	O C	0717	87-015-908-010	CAP,E 220-4V	k	1
MAIN	O C	0718	87-015-908-010	CAP,E 220-4V	k	1
MAIN	X C	0719	87-012-274-080	C-CAP,0.001UF-50V	k	1
MAIN	X C	0720	87-012-274-080	C-CAP,0.001UF-50V	k	1
MAIN	X C	0721	S5-272-120-500	C-CAP,0.0027-50V	k	1
MAIN	X C	0722	S5-272-120-500	C-CAP,0.0027-50V	k	1
MAIN	X C	0796	S6-100-420-500	C-CAP,10P-50V	k	1
MAIN	X C	0797	S6-100-420-500	C-CAP,10P-50V	k	1
MAIN	X C	0798	S6-331-520-500	C-CAP,330PF-50V	k	1
MAIN	X C	0799	S6-331-520-500	C-CAP,330PF-50V	k	1
MAIN	O CN	0301	87-A60-756-080	C-CONNECTOR JST PITCH:0.5mm V	k	1
MAIN	O CN	0501	87-A60-424-010	FFC CONN,16P P=1MM	k	1
MAIN	O CN	0601	87-009-411-010	CONN,6P V	k	1
MAIN	S D	0101	87-A41-128-040	DIODE,MC2850	k	1
					XP-V835 AEZ1BBC	XP-V835 AK1SC
MAIN	S D	0102	87-A40-554-040	C-DIODE,RB491D	k	1
MAIN	S D	0201	87-A40-196-080	ZENER,UDZ6.2B	k	1
MAIN	S D	0406	87-A41-127-040	DIODE,MC2848	k	1
MAIN	X FB	0711	88-108-102-080	C-RES,1K-1/16	k	1
MAIN	X FB	0712	88-108-000-080	C-RES,0 -1/16W	k	1
MAIN	X FB	0713	88-108-000-080	C-RES,0 -1/16W	k	1
MAIN	X FB	0714	88-108-000-080	C-RES,0 -1/16W	k	1
MAIN	S IC	0201	87-A22-162-030	IC,BH6570KV	k	1
MAIN	S IC	0301	8C-HC7-611-030	IC,MN101C439-AR	k	1
MAIN	S IC	0302	S1-434-220-000	IC,PST3422UL	k	1
MAIN	S IC	0401	87-A22-226-030	IC,MN662786SBM	k	1
MAIN	S IC	0451	87-A21-939-010	IC,GLT4160M04 (G-LI	k	1
MAIN	S IC	0501	87-A21-873-040	IC,AN8399SA-E1	k	1
MAIN	S IC	0701	87-A22-163-040	IC,NJM2772V	k	1
MAIN	O J	0101	87-A61-340-010	POWER DC JACK TC18-099-01	k	1
MAIN	O J	0702	87-A61-339-010	JACK,3.5	k	1
MAIN	O L	0201	87-A50-759-080	C-COIL,330U LB2518T33	k	1
MAIN	O L	0202	87-A50-769-010	COIL,100U	k	1
MAIN	O L	0203	87-A50-759-080	C-COIL,330U LB2518T33	k	1
MAIN	O L	0204	87-A50-758-080	C-COIL,100U LB2518T10	k	1
					XP-V835 AEZ1BBC	XP-V835 AK1SC
MAIN	O L	0401	87-A50-758-080	C-COIL,100U LB2518T10	k	1
MAIN	O L	0501	87-A50-759-080	C-COIL,330U LB2518T33	k	1
MAIN	O L	0502	87-A50-759-080	C-COIL,330U LB2518T33	k	1
MAIN	S Q	0101	87-A30-681-040	TR,2SC4154	k	1
MAIN	S Q	0102	SA-001-14K-000	C-TR,DTA114YUA	k	1
MAIN	S Q	0104	87-A30-679-040	TR,2SC5810	k	1
MAIN	S Q	0201	87-A30-678-040	TR,2SA2070	k	1
MAIN	S Q	0204	87-A30-681-040	TR,2SC4154	k	1
MAIN	S Q	0211	87-A30-681-040	TR,2SC4154	k	1
MAIN	S Q	0501	SA-001-14Q-000	TR,DTC114TUA	k	1
MAIN	S Q	0504	SA-001-14K-000	C-TR,DTA114YUA	k	1
MAIN	S Q	0510	SA-016-890-000	C-TR,2SB1689	k	1
MAIN	S Q	0701	87-A30-386-040	C-TR,DTA114TUA	k	1
MAIN	X R	0101	S3-182-520-160	C-RES,1.8K-1/16W	k	1
MAIN	X R	0102	88-108-473-080	C-RES,47K-1/16W	k	1
MAIN	X R	0103	S3-688-510-180	C-RES,6.8-1/8	k	1
MAIN	X R	0105	S3-398-540-140	C-RES,3.9-1/4	k	1
MAIN	X R	0106	S3-561-520-160	C-RES,560-1/16W	k	1
MAIN	X R	0202	S3-100-520-160	C-RES,10-1/16W	k	1
MAIN	X R	0203	S3-220-520-160	C-RES,22-1/16W	k	1
					XP-V835 AEZ1BBC	XP-V835 AK1SC
MAIN	X R	0210	88-108-103-080	C-RES,10K-1/1	k	1
MAIN	X R	0211	88-108-102-080	C-RES,1K-1/16	k	1
MAIN	X R	0217	88-108-102-080	C-RES,1K-1/16	k	1
MAIN	X R	0218	S3-470-520-160	C-RES,47-1/16W	k	1
MAIN	X R	0221	88-108-104-080	C-RES,100K-1/	k	1
MAIN	X R	0222	88-108-104-080	C-RES,100K-1/	k	1
MAIN	X R	0223	88-108-104-080	C-RES,100K-1/	k	1
MAIN	X R	0224	88-108-104-080	C-RES,100K-1/	k	1
MAIN	X R	0225	88-108-104-080	C-RES,100K-1/	k	1
MAIN	X R	0226	88-108-104-080	C-RES,100K-1/	k	1
MAIN	X R	0227	88-108-104-080	C-RES,100K-1/	k	1
MAIN	X R	0301	S3-274-520-160	C-RES,270K-1/16W	k	1
MAIN	X R	0302	88-108-473-080	C-RES,47K-1/16W	k	1
MAIN	X R	0303	88-108-103-080	C-RES,10K-1/1	k	1
MAIN	X R	0304	S3-223-520-160	C-RES,22K-1/16W	k	1
MAIN	X R	0306	88-108-104-080	C-RES,100K-1/	k	1
MAIN	X R	0307	88-108-154-080	C-RES,150K-1/16W	k	1
MAIN	X R	0309	88-108-104-080	C-RES,100K-1/	k	1
MAIN	X R	0310	88-108-103-080	C-RES,10K-1/1	k	1
MAIN	X R	0311	88-108-103-080	C-RES,10K-1/1	k	1

ELECTRICAL PARTS LIST -5/7

! =⚠ SAFTY PARTS
C = Components marked
All components used on this model at the production line are shown in this service manual.
However, please note that not all components will be available as spare parts for after-sales service.
Components marked S and O are designated as spare parts for service and will be stocked at the spare parts centers.
Components marked X and R are not designated as spare parts for after sales service, and will not be stocked at the spare parts centers.

UNIT-NAME		! C REF-NO		PARTS-NO	PARTS-NAME	SUFFIX&MODEL									
						XP-V730 Y1SC	XP-V730 Y1BRC	XP-V737 AEZ1SC	XP-V831 AEZ1SC	XP-V831 AEZ1LC	XP-V831 AEZ1GC	XP-V831 AEZ1BGLC	XP-V831 AK1SC	XP-V835 AEZ1SC	XP-V835 AEZ1LC
MAIN		X	R	0312	88-108-103-080	C-RES,10K-1/1	a	b	c	d	e	f	g	h	i
MAIN		X	R	0313	S3-101-520-160	C-RES,100-1/1	a	b	c	d	e	f	g	h	i
MAIN		X	R	0314	88-108-104-080	C-RES,100K-1/	a	b	c	d	e	f	g	h	i
MAIN		X	R	0315	88-108-154-080	C-RES,150K-1/16W	a	b	c	d	e	f	g	h	i
MAIN		X	R	0316	88-108-103-080	C-RES,10K-1/1	a	b	c	d	e	f	g	h	i
MAIN		X	R	0317	88-108-104-080	C-RES,100K-1/	a	b	c	d	e	f	g	h	i
MAIN		X	R	0320	88-108-000-080	C-RES,0 -1/16W	a	b	c	d	e	f	g	h	i
MAIN		X	R	0321	88-108-000-080	C-RES,0 -1/16W	a	b	c	d	e	f	g	h	i
MAIN		X	R	0322	88-108-104-080	C-RES,100K-1/	a	b	c	d	e	f	g	h	i
MAIN		X	R	0323	88-108-104-080	C-RES,100K-1/	a	b	c	d	e	f	g	h	i
MAIN		X	R	0324	88-108-000-080	C-RES,0 -1/16W	a	b	c	d	e	f	g	h	i
MAIN		X	R	0325	88-108-000-080	C-RES,0 -1/16W	a	b	c	d	e	f	g	h	i
MAIN		X	R	0326	88-108-000-080	C-RES,0 -1/16W	a	b	c	d	e	f	g	h	i
MAIN		X	R	0327	S3-124-520-160	C-RES,120K-1/16W	a	b	c	d	e	f	g	h	i
MAIN		X	R	0330	88-108-104-080	C-RES,100K-1/	a	b	c	d	e	f	g	h	i
MAIN		X	R	0338	88-108-000-080	C-RES,0 -1/16W	a	b	c	d	e	f	g	h	i
MAIN		X	R	0339	88-108-000-080	C-RES,0 -1/16W	a	b	c	d	e	f	g	h	i
MAIN		X	R	0340	88-108-000-080	C-RES,0 -1/16W	a	b	c	d	e	f	g	h	i
MAIN		X	R	0341	88-108-000-080	C-RES,0 -1/16W	a	b	c	d	e	f	g	h	i
MAIN		X	R	0382	88-108-104-080	C-RES,100K-1/	a	b	c	d	e	f	g	h	i
						XP-V730 Y1SC	XP-V730 Y1BRC	XP-V737 AEZ1SC	XP-V831 AEZ1SC	XP-V831 AEZ1LC	XP-V831 AEZ1GC	XP-V831 AEZ1BGLC	XP-V831 AK1SC	XP-V835 AEZ1SC	XP-V835 AEZ1LC
MAIN		X	R	0401	S3-563-520-160	C-RES,56K-1/16W	a	b	c	d	e	f	g	h	i
MAIN		X	R	0402	S3-683-520-160	C-RES,68K-1/16W	a	b	c	d	e	f	g	h	i
MAIN		X	R	0403	S3-222-520-160	C-RES,2.2K-1/16W	a	b	c	d	e	f	g	h	i
MAIN		X	R	0404	S3-151-520-160	C-RES,150-1/16W	a	b	c	d	e	f	g	h	i
MAIN		X	R	0405	88-108-104-080	C-RES,100K-1/	a	b	c	d	e	f	g	h	i
MAIN		X	R	0406	88-108-000-080	C-RES,0 -1/16W	a	b	c	d	e	f	g	h	i
MAIN		X	R	0409	S3-100-520-160	C-RES,10-1/16W	a	b	c	d	e	f	g	h	i
MAIN		X	R	0410	88-118-101-080	C-RES,100-1/10W	a	b	c	d	e	f	g	h	i
MAIN		X	R	0413	S3-470-520-160	C-RES,47-1/16W	a	b	c	d	e	f	g	h	i
MAIN		X	R	0415	88-108-000-080	C-RES,0 -1/16W	a	b	c	d	e	f	g	h	i
MAIN		X	R	0416	88-108-000-080	C-RES,0 -1/16W	a	b	c	d	e	f	g	h	i
MAIN		X	R	0451	S3-100-520-160	C-RES,10-1/16W	a	b	c	d	e	f	g	h	i
MAIN		X	R	0501	88-108-000-080	C-RES,0 -1/16W	a	b	c	d	e	f	g	h	i
MAIN		X	R	0502	88-108-000-080	C-RES,0 -1/16W	a	b	c	d	e	f	g	h	i
MAIN		X	R	0503	88-108-000-080	C-RES,0 -1/16W	a	b	c	d	e	f	g	h	i
MAIN		X	R	0504	88-108-000-080	C-RES,0 -1/16W	a	b	c	d	e	f	g	h	i
MAIN		X	R	0505	S3-822-520-160	C-RES,8.2K-1/16W	a	b	c	d	e	f	g	h	i
MAIN		X	R	0506	S3-822-520-160	C-RES,8.2K-1/16W	a	b	c	d	e	f	g	h	i
MAIN		X	R	0507	88-108-104-080	C-RES,100K-1/	a	b	c	d	e	f	g	h	i
MAIN		X	R	0508	S3-223-520-160	C-RES,22K-1/16W	a	b	c	d	e	f	g	h	i
						XP-V730 Y1SC	XP-V730 Y1BRC	XP-V737 AEZ1SC	XP-V831 AEZ1SC	XP-V831 AEZ1LC	XP-V831 AEZ1GC	XP-V831 AEZ1BGLC	XP-V831 AK1SC	XP-V835 AEZ1SC	XP-V835 AEZ1LC
MAIN		X	R	0509	S3-333-520-160	C-RES,33K-1/16W	a	b	c	d	e	f	g	h	i
MAIN		X	R	0510	S3-124-520-160	C-RES,120K-1/16W	a	b	c	d	e	f	g	h	i
MAIN		X	R	0511	S3-223-520-160	C-RES,22K-1/16W	a	b	c	d	e	f	g	h	i
MAIN		X	R	0512	S3-822-520-160	C-RES,8.2K-1/16W	a	b	c	d	e	f	g	h	i
MAIN		X	R	0513	S3-222-520-160	C-RES,2.2K-1/16W	a	b	c	d	e	f	g	h	i
MAIN		X	R	0514	S3-182-520-160	C-RES,1.8K-1/16W	a	b	c	d	e	f	g	h	i
MAIN		X	R	0515	S3-100-520-160	C-RES,10-1/16W	a	b	c	d	e	f	g	h	i
MAIN		X	R	0519	S3-101-520-160	C-RES,100-1/1	a	b	c	d	e	f	g	h	i
MAIN		X	R	0523	88-108-000-080	C-RES,0 -1/16W	a	b	c	d	e	f	g	h	i
MAIN		X	R	0701	S3-688-520-160	C-RES,6.8-1/16W	a	b	c	d	e	f	g	h	i
MAIN		X	R	0702	88-108-103-080	C-RES,10K-1/1	a	b	c	d	e	f	g	h	i
MAIN		X	R	0703	S3-472-520-160	C-RES,4.7K-1/16W	a	b	c	d	e	f	g	h	i
MAIN		X	R	0704	S3-472-520-160	C-RES,4.7K-1/16W	a	b	c	d	e	f	g	h	i
MAIN		X	R	0707	88-108-102-080	C-RES,1K-1/16	a	b	c	d	e	f	g	h	i
MAIN		X	R	0708	88-108-104-080	C-RES,100K-1/	a	b	c	d	e	f	g	h	i
MAIN		X	R	0709	88-108-102-080	C-RES,1K-1/16	a	b	c	d	e	f	g	h	i
MAIN		X	R	0710	88-108-104-080	C-RES,100K-1/	a	b	c	d	e	f	g	h	i
MAIN		X	R	0711	88-108-103-080	C-RES,10K-1/1	a	b	c	d	e	f	g	h	i
MAIN		X	R	0712	88-108-103-080	C-RES,10K-1/1	a	b	c	d	e	f	g	h	i
MAIN		X	R	0713	S3-228-520-160	C-RES,2.2-1/16W	a	b	c	d	e	f	g	h	i
						XP-V730 Y1SC	XP-V730 Y1BRC	XP-V737 AEZ1SC	XP-V831 AEZ1SC	XP-V831 AEZ1LC	XP-V831 AEZ1GC	XP-V831 AEZ1BGLC	XP-V831 AK1SC	XP-V835 AEZ1SC	XP-V835 AEZ1LC
MAIN		X	R	0714	S3-228-520-160	C-RES,2.2-1/16W	a	b	c	d	e	f	g	h	i
MAIN		X	R	0719	S3-561-520-160	C-RES,560-1/16W	a	b	c	d	e	f	g	h	i
MAIN		X	R	0720	S3-561-520-160	C-RES,560-1/16W	a	b	c	d	e	f	g	h	i
MAIN		X	R	0722	S3-181-520-160	C-RES,180-1/16W	a	b	c	d	e	f	g	h	i
MAIN		O	S	0301	87-A92-360-080	SW,PUSH 1P1T LVR MPU11190MLB	a	b	c	d	e	f	g	h	i
MAIN		O	S	0302	87-A90-703-080	C-SW,SL 1P3T SSSS81	a	b	c	d	e	f	g	h	i
MAIN		O	S	0311	87-A91-813-010	SW,TACT SKHLLDA010	a	b	c	d	e	f	g	h	i
MAIN		O	S	0312	87-A91-813-010	SW,TACT SKHLLDA010	a	b	c	d	e	f	g	h	i
MAIN		O	X	0301	87-030-194-010	X'TAL,32.768 KHZ	a	b	c	d	e	f	g	h	i
MAIN		O	X	0302	87-A70-373-010	CERAMIC RESONATOR 8.457MHZ	a	b	c	d	e	f	g	h	i
MAIN		O	X	0401	87-A70-375-080	CHIP CERAMIC RESONATOR 16.93	a	b	c	d	e	f	g	h	i

ELECTRICAL PARTS LIST - 6/7

! =  SAFETY PARTS

C = Components marked

All components used on this model at the production line are shown in this service manual.

However, please note that not all components will be available as spare parts for after-sales service.

Components marked S and O are designated as spare parts for service and will be stocked at the spare parts centers.

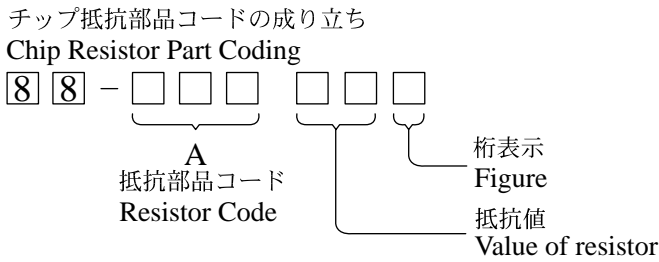
Components marked X and R are not designated as spare parts for after sales service, and will not be stocked at the spare parts centers.

UNIT-NAME	!	C	REF-NO	PARTS-NO	PARTS-NAME	SUFFIX&MODEL	
						XP-V835 AEZ1BBC	XP-V835 AK1SC
MAIN		X R	0312	88-108-103-080	C-RES,10K-1/1	k	1
MAIN		X R	0313	S3-101-520-160	C-RES,100-1/1	k	1
MAIN		X R	0314	88-108-104-080	C-RES,100K-1/	k	1
MAIN		X R	0315	88-108-154-080	C-RES,150K-1/16W	k	1
MAIN		X R	0316	88-108-103-080	C-RES,10K-1/1	k	1
MAIN		X R	0317	88-108-104-080	C-RES,100K-1/	k	1
MAIN		X R	0320	88-108-000-080	C-RES,0 -1/16W	k	1
MAIN		X R	0321	88-108-000-080	C-RES,0 -1/16W	k	1
MAIN		X R	0322	88-108-104-080	C-RES,100K-1/	k	1
MAIN		X R	0323	88-108-104-080	C-RES,100K-1/	k	1
MAIN		X R	0324	88-108-000-080	C-RES,0 -1/16W	k	1
MAIN		X R	0325	88-108-000-080	C-RES,0 -1/16W	k	1
MAIN		X R	0326	88-108-000-080	C-RES,0 -1/16W	k	1
MAIN		X R	0327	S3-124-520-160	C-RES,120K-1/16W	k	1
MAIN		X R	0330	88-108-104-080	C-RES,100K-1/	k	1
MAIN		X R	0338	88-108-000-080	C-RES,0 -1/16W	k	1
MAIN		X R	0339	88-108-000-080	C-RES,0 -1/16W	k	1
MAIN		X R	0340	88-108-000-080	C-RES,0 -1/16W	k	1
MAIN		X R	0341	88-108-000-080	C-RES,0 -1/16W	k	1
MAIN		X R	0382	88-108-104-080	C-RES,100K-1/	k	1
						XP-V835 AEZ1BBC	XP-V835 AK1SC
MAIN		X R	0401	S3-563-520-160	C-RES,56K-1/16W	k	1
MAIN		X R	0402	S3-683-520-160	C-RES,68K-1/16W	k	1
MAIN		X R	0403	S3-222-520-160	C-RES,2.2K-1/16W	k	1
MAIN		X R	0404	S3-151-520-160	C-RES,150-1/16W	k	1
MAIN		X R	0405	88-108-104-080	C-RES,100K-1/	k	1
MAIN		X R	0406	88-108-000-080	C-RES,0 -1/16W	k	1
MAIN		X R	0409	S3-100-520-160	C-RES,10-1/16W	k	1
MAIN		X R	0410	88-118-101-080	C-RES,100-1/10W	k	1
MAIN		X R	0413	S3-470-520-160	C-RES,47-1/16W	k	1
MAIN		X R	0415	88-108-000-080	C-RES,0 -1/16W	k	1
MAIN		X R	0416	88-108-000-080	C-RES,0 -1/16W	k	1
MAIN		X R	0451	S3-100-520-160	C-RES,10-1/16W	k	1
MAIN		X R	0501	88-108-000-080	C-RES,0 -1/16W	k	1
MAIN		X R	0502	88-108-000-080	C-RES,0 -1/16W	k	1
MAIN		X R	0503	88-108-000-080	C-RES,0 -1/16W	k	1
MAIN		X R	0504	88-108-000-080	C-RES,0 -1/16W	k	1
MAIN		X R	0505	S3-822-520-160	C-RES,8.2K-1/16W	k	1
MAIN		X R	0506	S3-822-520-160	C-RES,8.2K-1/16W	k	1
MAIN		X R	0507	88-108-104-080	C-RES,100K-1/	k	1
MAIN		X R	0508	S3-223-520-160	C-RES,22K-1/16W	k	1
						XP-V835 AEZ1BBC	XP-V835 AK1SC
MAIN		X R	0509	S3-333-520-160	C-RES,33K-1/16W	k	1
MAIN		X R	0510	S3-124-520-160	C-RES,120K-1/16W	k	1
MAIN		X R	0511	S3-223-520-160	C-RES,22K-1/16W	k	1
MAIN		X R	0512	S3-822-520-160	C-RES,8.2K-1/16W	k	1
MAIN		X R	0513	S3-222-520-160	C-RES,2.2K-1/16W	k	1
MAIN		X R	0514	S3-182-520-160	C-RES,1.8K-1/16W	k	1
MAIN		X R	0515	S3-100-520-160	C-RES,10-1/16W	k	1
MAIN		X R	0519	S3-101-520-160	C-RES,100-1/1	k	1
MAIN		X R	0523	88-108-000-080	C-RES,0 -1/16W	k	1
MAIN		X R	0701	S3-688-520-160	C-RES,6.8-1/16W	k	1
MAIN		X R	0702	88-108-103-080	C-RES,10K-1/1	k	1
MAIN		X R	0703	S3-472-520-160	C-RES,4.7K-1/16W	k	1
MAIN		X R	0704	S3-472-520-160	C-RES,4.7K-1/16W	k	1
MAIN		X R	0707	88-108-102-080	C-RES,1K-1/16	k	1
MAIN		X R	0708	88-108-104-080	C-RES,100K-1/	k	1
MAIN		X R	0709	88-108-102-080	C-RES,1K-1/16	k	1
MAIN		X R	0710	88-108-104-080	C-RES,100K-1/	k	1
MAIN		X R	0711	88-108-103-080	C-RES,10K-1/1	k	1
MAIN		X R	0712	88-108-103-080	C-RES,10K-1/1	k	1
MAIN		X R	0713	S3-228-520-160	C-RES,2.2-1/16W	k	1
						XP-V835 AEZ1BBC	XP-V835 AK1SC
MAIN		X R	0714	S3-228-520-160	C-RES,2.2-1/16W	k	1
MAIN		X R	0719	S3-561-520-160	C-RES,560-1/16W	k	1
MAIN		X R	0720	S3-561-520-160	C-RES,560-1/16W	k	1
MAIN		X R	0722	S3-181-520-160	C-RES,180-1/16W	k	1
MAIN		O S	0301	87-A92-360-080	SW,PUSH 1P1T LVR MPU11190MLB	k	1
MAIN		O S	0302	87-A90-703-080	C-SW,SL 1P3T SSSS81	k	1
MAIN		O S	0311	87-A91-813-010	SW,TACT SKHLLDA010	k	1
MAIN		O S	0312	87-A91-813-010	SW,TACT SKHLLDA010	k	1
MAIN		O X	0301	87-030-194-010	X'TAL,32.768 KHZ	k	1
MAIN		O X	0302	87-A70-373-010	CERAMIC RESONATOR 8.457MHZ	k	1
MAIN		O X	0401	87-A70-375-080	CHIP CERAMIC RESONATOR 16.93	k	1


ELECTRICAL PARTS LIST - 7/7

- Regarding connectors, they are not stocked as they are not the initial order items.
The connectors are available after they are supplied from connector manufacturers upon the order is received.

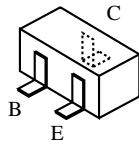
チップ抵抗部品コード／CHIP RESISTOR PART CODE



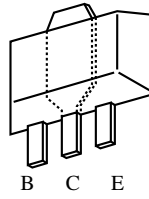
チップ抵抗
Chip resistor

容量 Wattage	種類 Type	許容誤差 Tolerance	記号 Symbol	寸法／Dimensions (mm)				抵抗コード : A Resistor Code : A
				外形／Form	L	W	t	
1/16W	1005	± 5%	CJ		1.0	0.5	0.35	104
1/16W	1608	± 5%	CJ		1.6	0.8	0.45	108
1/10W	2125	± 5%	CJ		2	1.25	0.45	118
1/8W	3216	± 5%	CJ		3.2	1.6	0.55	128

TRANSISTOR ILLUSTRATION -1/1

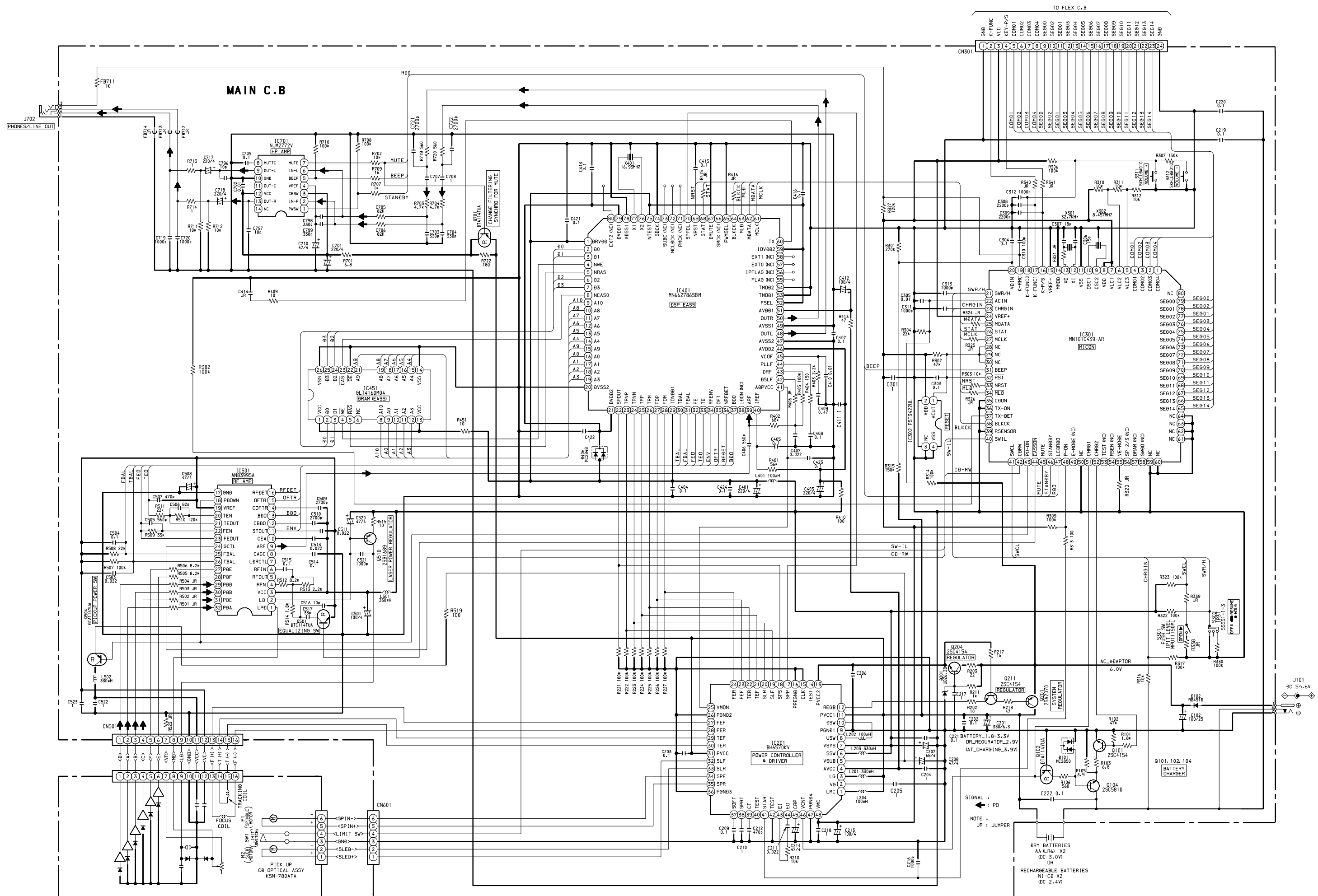


2SB1689
2SC4154
DTA114TUA
DTA114YUA
DTC114TUA

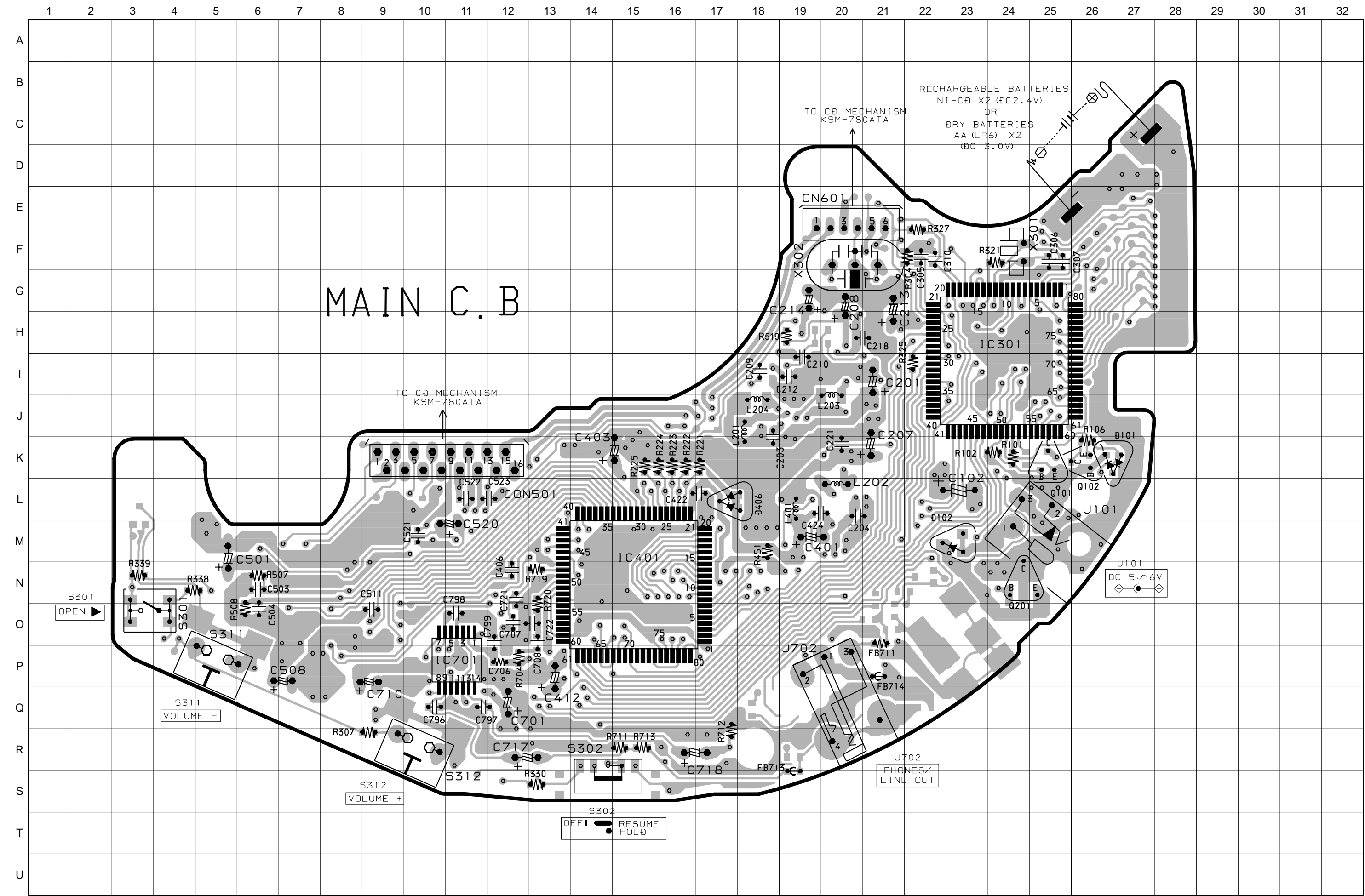


2SA2070
2SC5810

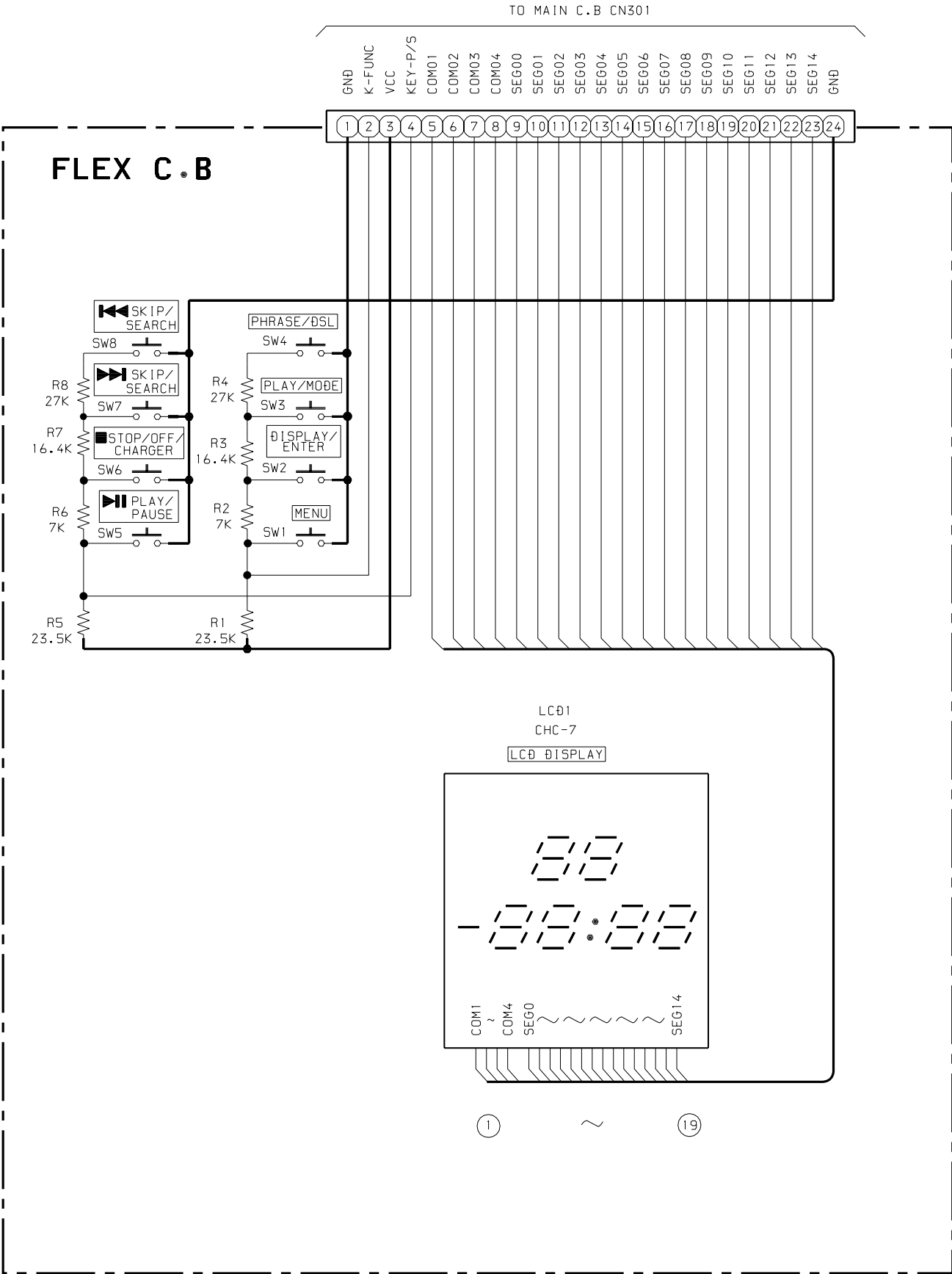
SCHEMATIC DIAGRAM - 1/2 (MAIN SECTION)



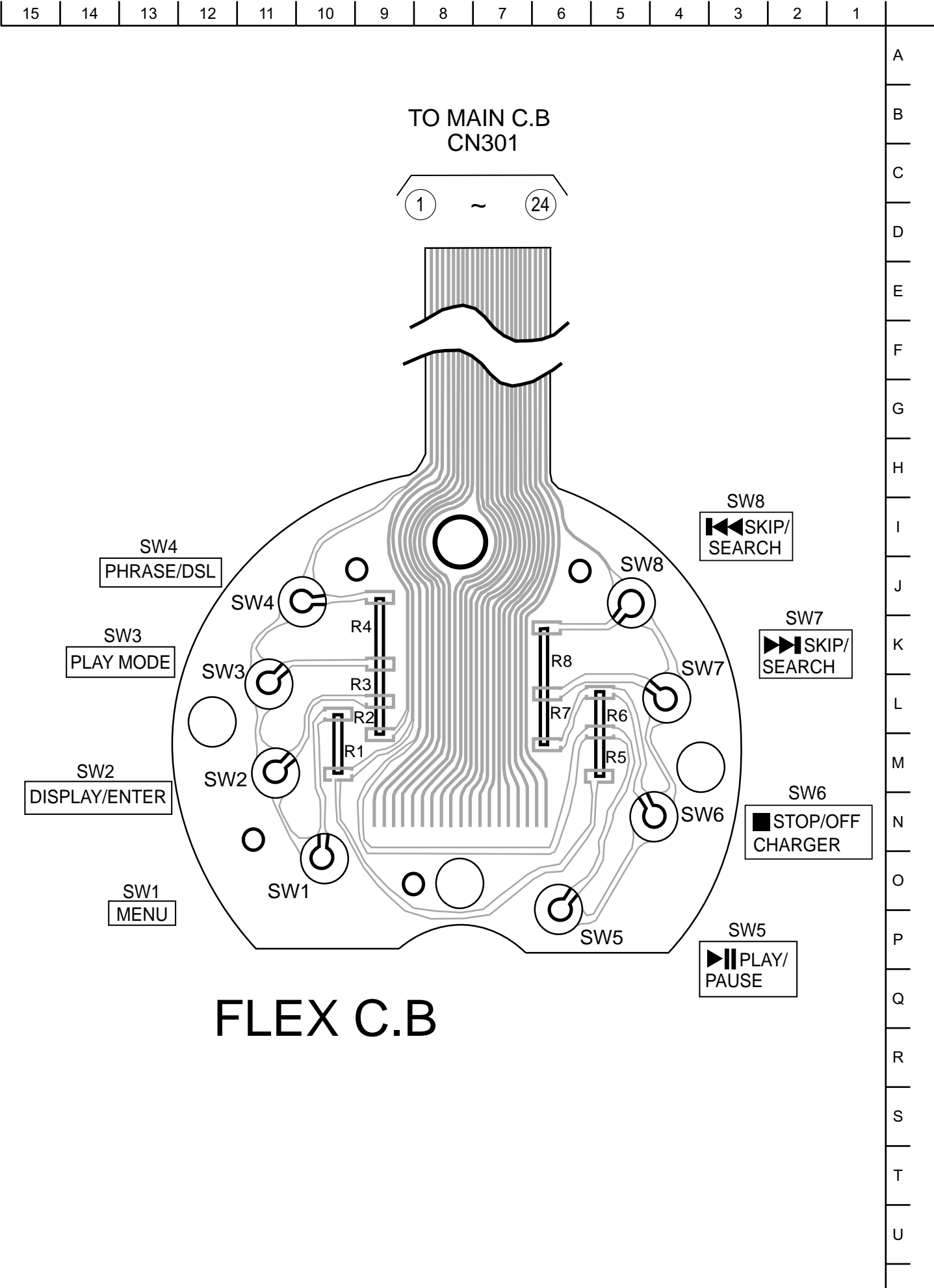
WIRING -2/4 (MAIN C.B -Bottom View-)



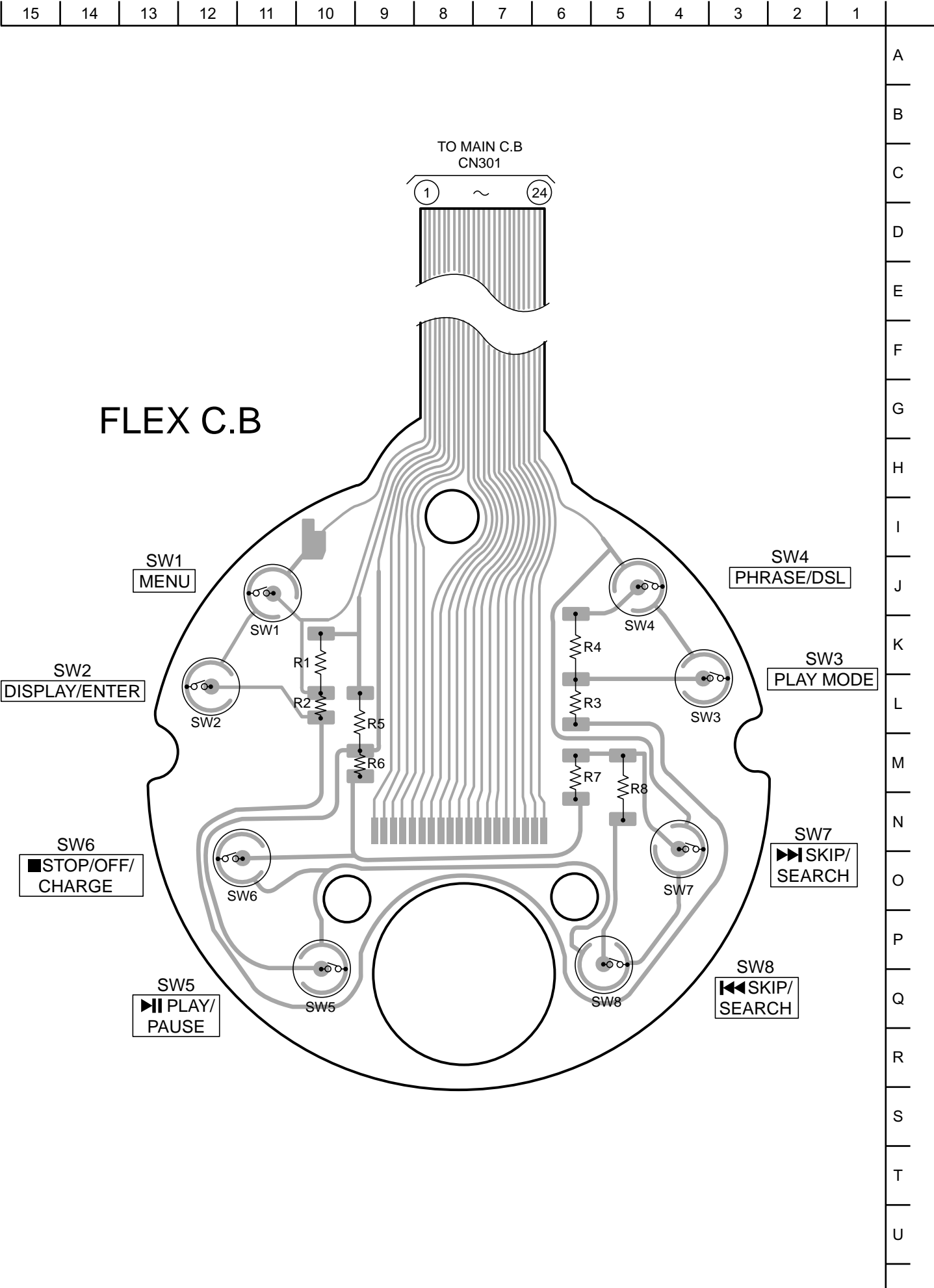
SCHEMATIC DIAGRAM -2/2 (FLEX SECTION)



WIRING - 3/4 (FLEX C.B) <XP-V730, V737>



WIRING - 4/4 (FLEX C.B) <XP-V831, V835>



VOLTAGE CHART -1/2

THE MEASURED VALUE IS DC VOLTAGE

UNIT: V

TEST CONDITION:CD PLAY

IC301 (MN101C439-AR)

PIN'S NUMBER	1	2	3	4	5	6	7	8	9	10
	1.10	1.10	1.10	1.10	0.43	1.39	2.60	2.59	1.25	1.26
PIN'S NUMBER	11	12	13	14	15	16	17	18	19	20
	0	1.00	1.37	0	0	2.60	2.6	2.58	0	1.88
PIN'S NUMBER	21	22	23	24	25	26	27	28	29	30
	2.50	0	0	2.60	2.56	1.90	2.57	0.00	0	0
PIN'S NUMBER	31	32	33	34	35	36	37	38	39	40
	0	2.60	2.60	2.60	0	0	0	0	0	2.60
PIN'S NUMBER	41	42	43	44	45	46	47	48	49	50
	0	0	2.56	0	0	2.57	1.10	0	2.56	0
PIN'S NUMBER	51	52	53	54	55	56	57	58	59	60
	0	0	2.56	2.57	0	2.57	2.57	2.57	/	/
PIN'S NUMBER	61	62	63	64	65	66	67	68	69	70
	/	/	/	/	/	/	/	/	/	/
PIN'S NUMBER	71	72	73	74	75	76	77	78	79	80
	/	/	/	/	/	/	/	/	/	/

IC401 (MN662786SB)

PIN'S NUMBER	1	2	3	4	5	6	7	8	9	10
	2.49	1.26	1.26	2.36	2.26	1.26	1.28	2.44	0.10	0.10
PIN'S NUMBER	11	12	13	14	15	16	17	18	19	20
	0.10	0.10	0.17	0.17	0.11	0.43	0.43	0.43	0.40	0
PIN'S NUMBER	21	22	23	24	25	26	27	28	29	30
	1.87	0.48	0	0	0	0	0	0	0.44	0.43
PIN'S NUMBER	31	32	33	34	35	36	37	38	39	40
	0.43	1.23	1.17	1.23	0	0	0	2.36	1.18	1.05
PIN'S NUMBER	41	42	43	44	45	46	47	48	49	50
	1.50	1.19	1.18	2.10	0	2.38	0	1.43	0	1.43
PIN'S NUMBER	51	52	53	54	55	56	57	58	59	60
	2.86	2.49	0	0	0.36	0	1.03	0	2.49	0
PIN'S NUMBER	61	62	63	64	65	66	67	68	69	70
	2.53	2.52	2.57	0	0	1.13	0	1.50	2.57	0
PIN'S NUMBER	71	72	73	74	75	76	77	78	79	80
	1.24	2.46	0	0	0	1.02	1.00	0	0	0

IC701 (NJM2772V)

PIN'S NUMBER	1	2	3	4	5	6	7
	2.53	1.23	3.00	2.00	0	1.40	0
PIN'S NUMBER	8	9	10	11	12	13	14
	0.88	1.10	0	1.06	3.00	1.08	0

IC451 (GM71VLS17403CTL)

PIN'S NUMBER	1	2	3	4	5	6	7	8	9	10
	2.46	1.23	1.24	2.29	2.25	0	/	0.43	0.14	0.14
PIN'S NUMBER	11	12	13	14	15	16	17	18	19	20
	0.40	0	2	0	0.17	0.17	0.17	0	0.39	/
PIN'S NUMBER	21	22	23	24	25	26				
	0.45	0	2.33	1.22	1.23	0				

VOLTAGE CHART -2/2

IC302 (PST3422UL)

PIN'S NUMBER	1	2	3	4
	2.56	2.56	0	0

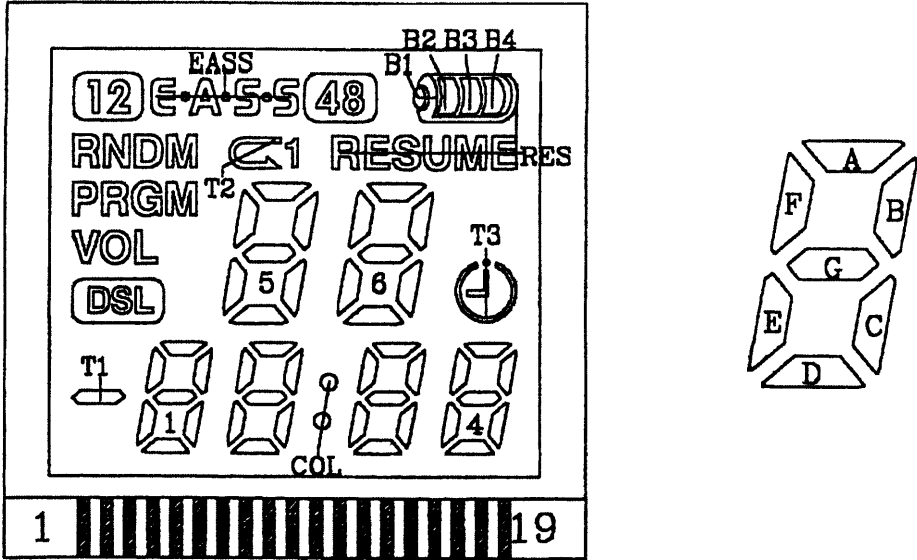
IC501(AN8399SA)

PIN'S NUMBER	1	2	3	4	5	6	7	8
	0.17	1.66	2.44	0	0.91	1.65	1.21	1.35
PIN'S NUMBER	9	10	11	12	13	14	15	16
	1.21	0.91	1.23	1.46	0	0	0	0
PIN'S NUMBER	17	18	19	20	21	22	23	24
	0	2.56	0.43	0.30	1.20	1.22	1.22	1.20
PIN'S NUMBER	25	26	27	28	29	30	31	32
	1.22	1.26	1.22	1.22	0	0	0	0.44

IC201 (BH6570KV)

PIN'S NUMBER	1	2	3	4	5	6	7	8	9	10
	3.00	5.97	3.00	2.95	3.16	2.48	2.50	2.51	0	2.55
PIN'S NUMBER	11	12	13	14	15	16	17	18	19	20
	3.00	0.37	0	2.47	0	0	0	0.54	0	0
PIN'S NUMBER	21	22	23	24	25	26	27	28	29	30
	0	0	0	0	1.49	0	0	0	0	0
PIN'S NUMBER	31	32	33	34	35	36	37	38	39	40
	3.04	0	0	0	0.62	0	2.02	0	0.40	2.48
PIN'S NUMBER	41	42	43	44	45	46	47	48		
	0	0	0.92	0.53	2.95	0	0	2.58		

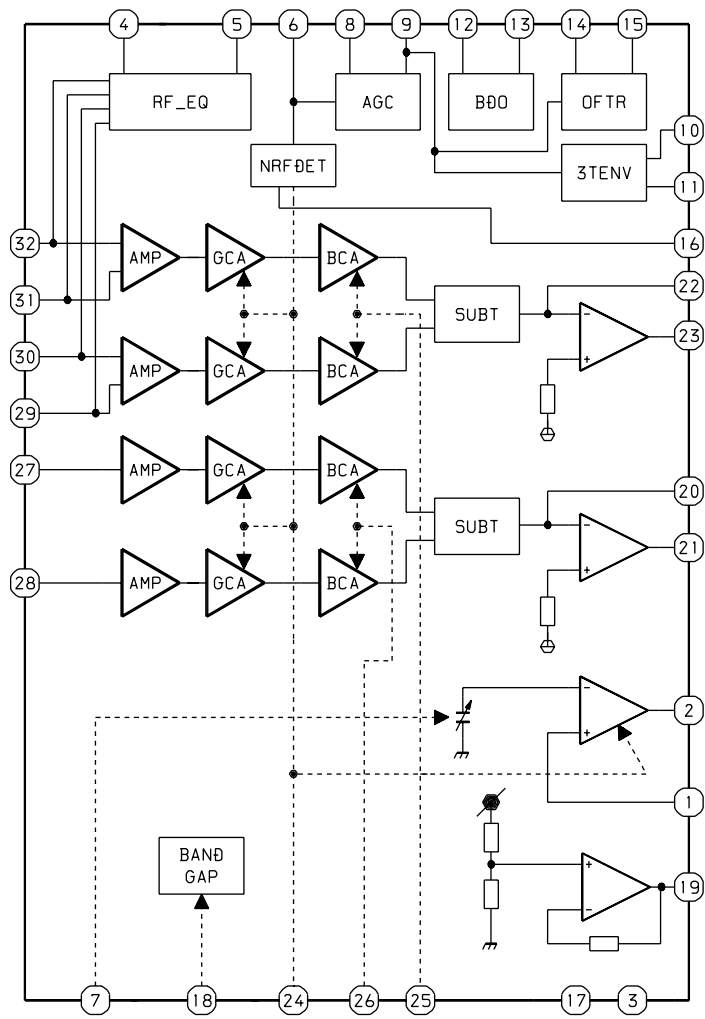
TRANSISTOR	Q101(2SC4154)			Q102(DTA114YU)			Q104(2SC5810)		
	E	C	B	E	C	B	E	C	B
	0	0	0	0	1.70	0	0	0	0.20
TRANSISTOR	Q201(2SA2070)			Q204(2SC4154)			Q211(2SC4154)		
	E	C	B	E	C	B	E	C	B
	0	3.00	3.40	0	0	0	3	4.00	0



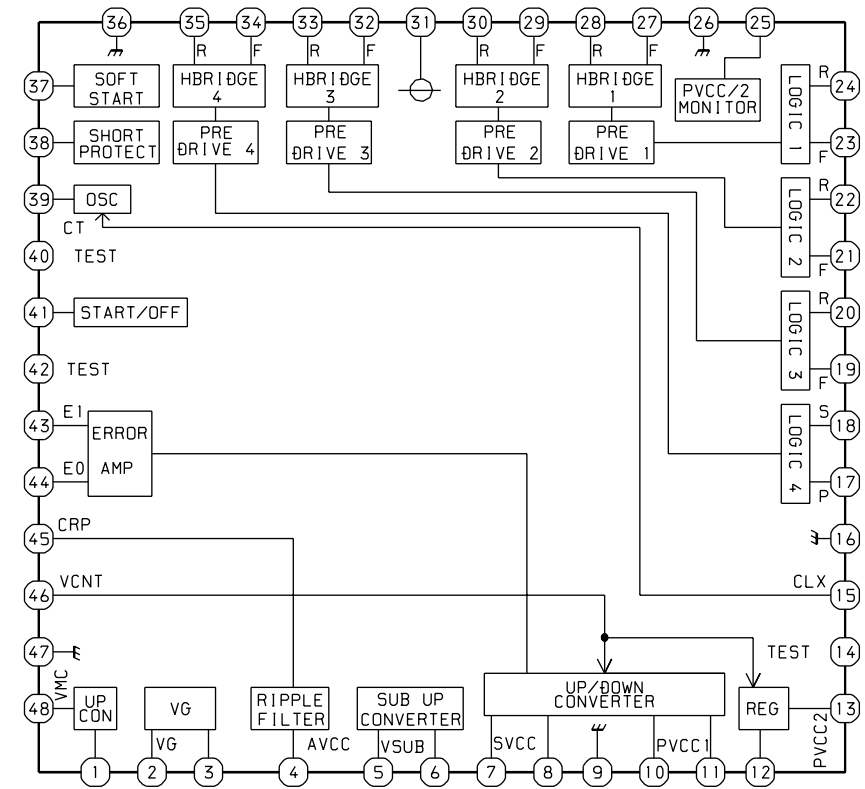
COM/PIN #	1	2	3	4	5	6	7	8	9	10	11	12	13	14	15	16	17	18	19
COM-1	COM1				12	5C	5D	1D	1C	2D	2C	3D	3C	4D	4C	6D	6C	B4	B3
COM-2		COM2			RNDM	5G	5E	1E	1G	2E	2G	3E	3G	4E	4G	6E	6G	B1	B2
COM-3			COM3		PRGM	5B	5F	1F	1B	2F	2B	3F	3B	4F	4B	6F	6B	RES	48
COM-4				COM4	VOL	5A	DSL	T1	1A		2A	COL	3A	T3	4A	T2	6A	1	EASS

IC BLOCK DIAGRAM - 1/1

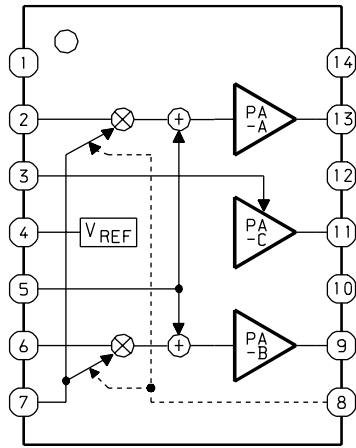
IC, AN8399SA



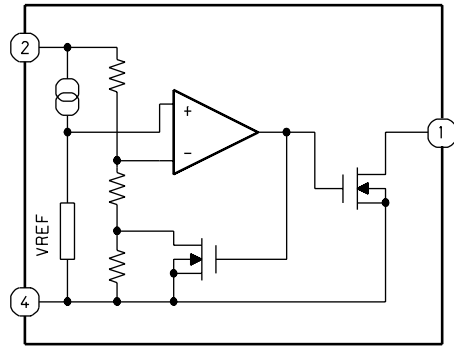
IC, BH6570KV



IC, NJM2772V



IC, PST3422UL



IC DESCRIPTION -1/2 (MN662786SB) -1/2

Pin No.	Pin Name	I/O	Description
1	DRVDD	I	DRAM interface power (terminal No. 2 to 19).
2 ~ 3	D0 ~ D1	I/O	DRAM data input/output signal 0 ~ 1.
4	NWE	O	DRAM write enable signal.
5	NRAS	O	DRAM RAS control signal.
6 ~ 7	D2 ~ D3	I/O	DRAM data input/output signal 2 ~ 3.
8	NCAS0	O	DRAM CAS control signal 0.
9	A10	O	DRAM address signal 10.
10 ~ 14	A8 ~ A4	O	DRAM address signal 8 ~ 4.
15	A9	O	DRAM address signal 9.
16 ~ 19	A0 ~ A3	O	DRAM address signal 0 ~ 3.
20	DVSS2	I	Digital circuit GND.
21	DVDD2	I	Digital circuit power.
22	SPOUT	O	Spindle motor driver signal output.
23	TRVP	O	Traverse drive output (- polar output).
24	TRVM	O	Traverse drive output (+ polar output).
25	TRP	O	Tracking drive output (- polar output).
26	TRM	O	Tracking drive output (+ polar output).
27	FOP	O	Focus drive output (- polar output).
28	FOM	O	Focus drive output (+ polar output).
29	IOVDD1	I	I/O Power supply.
30	TBAL	O	Tracking balance adjustment output.
31	FBAL	O	Focus balance adjustment output.
32	FE	I	Focus error signal input (analogue input).
33	TE	I	Tracking error signal input (analogue input).
34	RFENV	I	RF envelope signal input (analogue input).
35	OFT	I	Off track signal input. "H" = Off track.
36	NRFDET	I	RF detection signal input. "L" = Detected.
37	BDO	I	Drop out signal input. "H" = Drop out.
38	LDON (NC)	O	Laser ON signal output. "H" = ON. (Not used)
39	ARF	I	RF signal input.
40	IREF	I	Reference current input terminal.
41	ADPVCC	I	AD reference voltage input (analogue input).
42	DSLIF	O	DSL loop filter terminal.
43	DRF	O	Bias terminal for DSL.
44	PLLIF	O	PLL loop filter terminal.
45	VCOF	O	Jitter free VCO loop filter terminal.
46	AVDD2	I	Analogue circuit power (for DSL, PLL, VCOF, AD, DA).
47	AVSS2	I	Analogue circuit GND (for DSL, PLL, VCOF, AD, DA).
48	OUTL	O	Lch audio output.

IC DESCRIPTION -1/2 (MN662786SB) -2/2

Pin No.	Pin Name	I/O	Description
49	AVSS1	I	Analogue circuit GND.
50	OUTR	O	Rch audio output.
51	AVDD1	I	Analogue circuit power.
52	FSEL	I	Noise filter ON/OFF switch input. “L” = ON, “H” = OFF. (Connected to VDD)
53	TMOD1	I	Terminal mode switch input terminal 1. Normally set to “L”. (Connected to GND)
54	TMOD2	I	Terminal mode switch input terminal 2. Normally set to “L”. (Connected to GND)
55	FLAG (NC)	O	Flag signal output. (Not used)
56	IPFLAG (NC)	O	Interpolation flag signal output. “H” = Interpolation. (Not used)
57	EXT0 (NC)	I/O	Extension input/output port 0. (Not used)
58	EXT1 (NC)	I/O	Extension input/output port 1. (Not used)
59	IOVDD2	I	IO Power supply.
60	TX	O	Digital audio interface output signal.
61	MCLK	I	Microcomputer command clock signal input. (Data is latched at loading edge)
62	MDATA	I	Microcomputer command data signal input.
63	MLD	I	Microcomputer command load signal input. “L” = Load.
64	BLKCK	O	Sub-code block clock signal fBLKCK = 75 Hz. (In normal PLAY mode)
65	PWMSEL	I/O	PWM output mode select input. (Connected to GND)
66	SMCK (NC)	O	4.236MHz / 8.4672MHz clock signal output. (Not used)
67	DMUTE	I/O	Muting input, “H” = MUTE. (Connected to GND)
68	STAT	O	Status signal output.
69	NRST	I	Reset input. “L” = Reset.
70	SPPOL	O	Spindle motor drive signal output. (Polar output)
71	PMCK (NC)	O	88.2 kHz clock signal output. (Not used)
72	NCLDCK (NC)	O	Sub-code frame clock signal output = 7.35 kHz (In normal PLAY mode) (Not used)
73	SUBC (NC)	O	Sub-code serial output. (Not used)
74	SBCK	O	Clock input for sub-code serial output. (Connected to GND)
75	NTEST	I	Test terminal, normally set to “H”. (Connected to VDD)
76	X2	O	Quartz oscillator circuit output terminal f = 16.93 MHz.
77	X1	I	Quartz oscillator circuit input terminal f = 16.93 MHz.
78	VD SS1	I	Digital circuit GND.
79	DVDD1	I	Digital circuit power.
80	EXT2 (NC)	I/O	Extension input / output port 2. (Not Used)

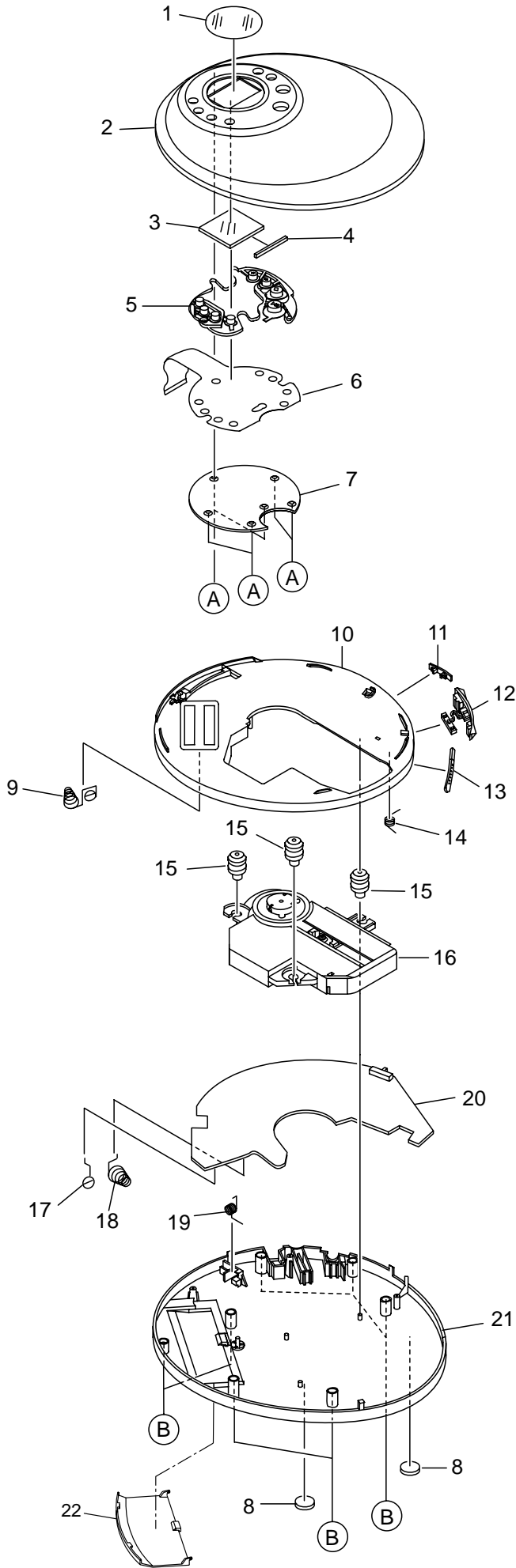
IC DESCRIPTION -2/2 (MN101C439-AR) -1/2

Pin No.	Pin Name	I/O	Description
1	COM04	O	LCD common output.
2	COM03	O	LCD common output.
3	COM02	O	LCD common output.
4	COM01	O	LCD common output.
5	VLC3	–	LCD drive voltage setting terminal.
6	VLC2	–	LCD drive voltage setting terminal.
7	VLC1	–	LCD drive voltage setting terminal.
8	VDD	–	LCD power.
9	OSC2	O	Micon main clock oscillator output. (8.457MHz)
10	OSC1	O	Micon main clock oscillator output. (8.457MHz)
11	VSS	–	GND.
12	X1	I	Sub clock oscillator. (32.7 kHz)
13	XO	O	Sub clock oscillator. (32.7 kHz)
14	MMOD	I	Processor mode unused. (Connected to GND)
15	VREF-	–	Connected to GND.
16	K-P / S	I	“ PLAY ” and “ STOP ” key inputs.
17	K-FUNG1	I	“ FUNCTION ” key input.
18	K-FUNC2	I	“ FUNCTION ” key input.
19	K-RMC	I	Wired remote control input.
20	VDIN	I	Battery voltage monitoring input.
21	SWR / H	I	Resume / Hold switch input.
22	ACIN	I	AC adaptor detection.
23	CHRGIN	I	Charge voltage monitoring input.
24	VREF+	–	Connected to VDD.
25	MDATA	O	DSP MDATA output.
26	STAT	I	DSP STAT input.
27	MCLK	O	DSP MCLK output.
28	NC	–	Not connected.
29	NC	–	Not connected.
30	NC	–	Not connected.
31	BEEP	O	Buzzer output for headphone.
32	$\overline{\text{RST}}$	I	Micro computer reset input.
33	NRST	O	DSP reset output.
34	$\overline{\text{MLD}}$	O	DSP MLD output.
35	CD ON	O	Connected to GND.
36	TX-ON	O	Connected to GND.
37	TX-DET	I	Optout jack detection.
38	BLKCK	I	DSP BLKCK input.
39	RESENSOR	I	Wireless control sensor signal input. (Connected to GND)
40	SWIL	I	Limited switch input.
41	SWCL	I	Cover open / close detection switch input.

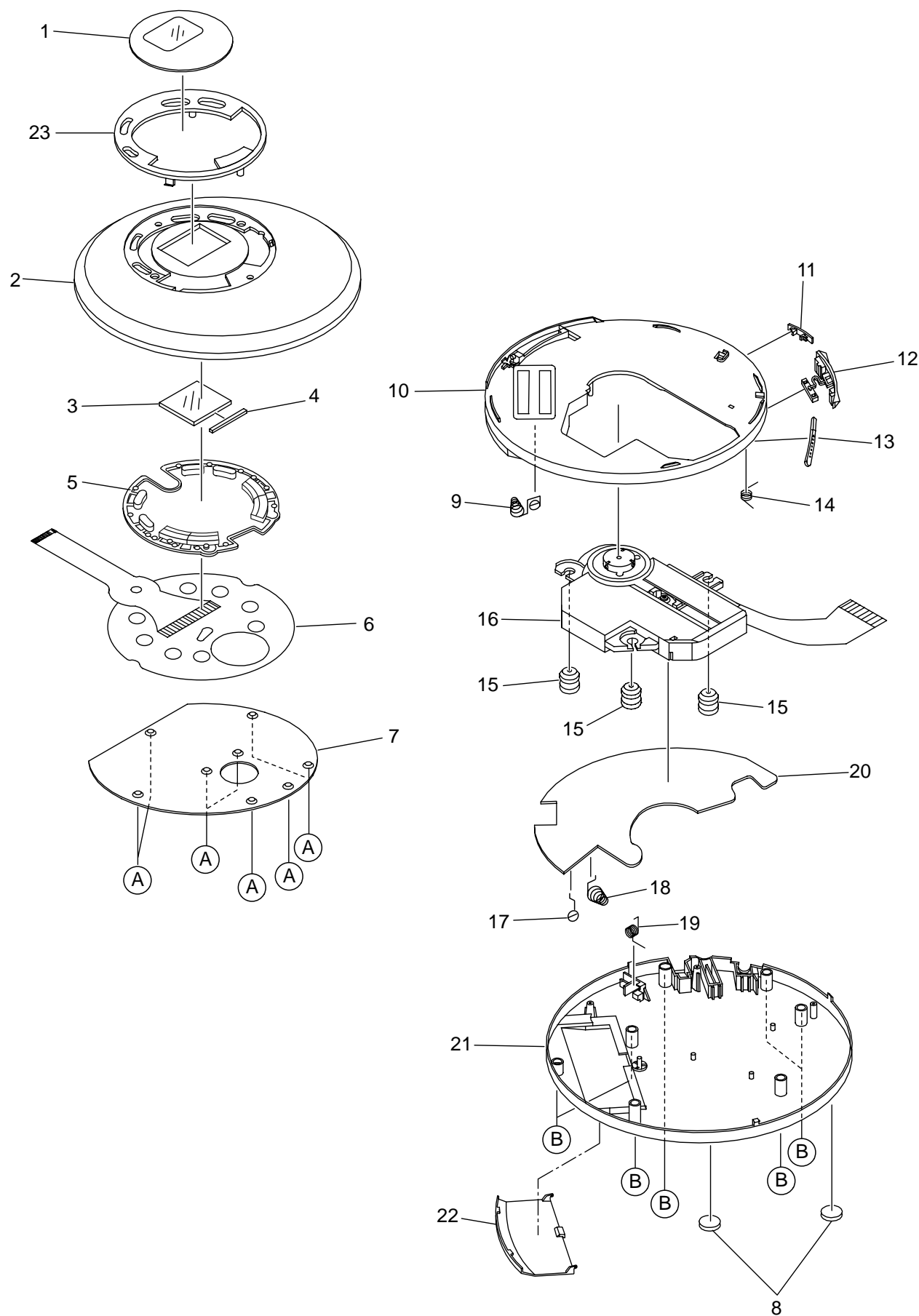
IC DESCRIPTION -2/2 (MN101C439-AR) -2/2

Pin No.	Pin Name	I/O	Description
42	CDRW	O	CD-RW play gain level selection output. OFF at “ L ”. Gain set at “ H ”. Normal at “ OPEN ”.
43	$\overline{\text{PU-ON}}$	O	H / A power down output.
44	$\overline{\text{EASSON}}$	O	EASS gain up selection output. Eass ON at = “ L ”.
45	MUTE	O	Audio mute output.
46	STANDBY	O	Headphone standby output. Standby at “ L ”. Power ON at “ H ”.
47	LCDRDO	O	Wired LCD remote control output.
48	$\overline{\text{P-ON}}$	O	Power IC power ON output. Power ON at “ L ”.
49	E-MODE (NC)	I	Continuously 2 time spindle speed mode. (Not used)
50	NC	–	Connected to GND.
51	CHRG1	O	Main charge output.
52	CHRG2	O	Sub charge output.
53	TEST (NC)	I	Enter test mode at “ L ”. (Not used)
54	RSEN (NC)	I	Wireless remote control sensor detection. (Not used)
55	VE-MODE	I	Variable re-proof timing detection for EASS 48. ON at “ L ”. (Connected to GND)
56	SP-2 / 3 (NC)	I	Not used.
57	DRAM (NC)	I	3 / 12 or 12 / 48 sec selection input. 3 / 12 sec at “ L ”. (Not used)
58	SWDO (NC)	I	Digital out detection ON at “ L ”. (Not used)
59	NC	–	Connected to GND.
60	NC	–	Connected to GND.
61	NC	–	Connected to GND.
62	NC	–	Connected to GND.
63	NC	–	Connected to GND.
64	NC	–	Connected to GND.
65	SEG14	O	LCD Segment output.
66	SEG13	O	LCD Segment output.
67	SEG12	O	LCD Segment output.
68	SEG11	O	LCD Segment output.
69	SEG10	O	LCD Segment output.
70	SEG09	O	LCD Segment output.
71	SEG08	O	LCD Segment output.
72	SEG07	O	LCD Segment output.
73	SEG06	O	LCD Segment output.
74	SEG05	O	LCD Segment output.
75	SEG04	O	LCD Segment output.
76	SEG03	O	LCD Segment output.
77	SEG02	O	LCD Segment output.
78	SEG01	O	LCD Segment output.
79	SEG00	O	LCD Segment output.
80	NC	–	Not connected.

MECHANICAL EXPLODED VIEW -1/2 <XP-V730,V737>



MECHANICAL EXPLODED VIEW -2/2 <XP-V831,V835>



MECHANICAL PARTS LIST -1/2

!

= ⚠ SAFTY PARTS

C

= Components marked

All components used on this model at the production line are shown in this service manual.


However, please note that not all components will be available as spare parts for after-sales service.

Components marked S and O are designated as spare parts for service and will be stocked at the spare parts centers.

Components marked X and R are not designated as spare parts for after sales service, and will not be stocked at the spare parts centers.

UNIT-NAME	! C	REF-NO	PARTS-NO	PARTS-NAME	SUFFIX&MODEL										
					XP-V730 Y1SC	XP-V730 Y1BRC	XP-V737 AEZ1SC	XP-V831 AEZ1SC	XP-V831 AEZ1LC	XP-V831 AEZ1GC	XP-V831 AEZ1BGLC	XP-V831 AK1SC	XP-V835 AEZ1SC	XP-V835 AEZ1LC	
	O	MC1001	8C-HC7-005-010	WINDOW,CD PLATE	a	b	c	
	O	MC1001	8C-HC7-032-010	LID,WINDOW	.	.	.	d	e	f	g	h	i	j	
	O	MC1001	8C-HC7-010-110	KNOB,SL HOLD	g	.	.	.	
	O	MC1001	8C-HC7-112-010	KNOB,SL HOLD (B)	
	O	MC1002	8C-HC7-027-010	LID,CD(730)	a	
	O	MC1002	8C-HC7-141-010	LID,CD(730R)	.	b	
	O	MC1002	8C-HC7-139-010	LID,CD(737)	.	.	c	
	O	MC1002	8C-HC7-035-010	LID,CD(831)	.	.	.	d	.	.	.	h	.	.	
	O	MC1002	8C-HC7-060-010	LID,CD(831L)	e	
	O	MC1002	8C-HC7-061-010	LID,CD(831G)	f	
	O	MC1002	8C-HC7-125-010	LID,CD(831GL)	g	.	.	.	
	O	MC1002	8C-HC7-041-010	LID,CD(835)	i	.	
	O	MC1002	8C-HC7-059-010	LID,CD(835L)	j	
	O	MC1002	8C-HC7-133-010	LID,CD(835,HI,B)	
	O	MC1003	S0-090-230-000	LCD-P-06D-25x23.5SM&&P G9023	a	b	c	d	e	f	g	h	i	j	
	O	MC1004	S0-524-021-500	ZEBRA CONNECTOR 24.8x2.3x1.5m	a	b	c	d	e	f	g	h	i	j	
	O	MC1005	8C-HC7-007-010	KNOB,PLAY	a	.	c	j	
	O	MC1005	8C-HC7-031-010	KEY,MAIN	.	.	.	d	e	f	g	h	i	j	
	O	MC1006	8C-HC7-602-010	FLEX PWB ASSY	a	b	c	j	
	O	MC1006	8C-HC7-604-010	MEMBRANCE SW MC-A1-A32 R45036	.	.	.	d	e	f	g	h	i	j	
					XP-V730 Y1SC	XP-V730 Y1BRC	XP-V737 AEZ1SC	XP-V831 AEZ1SC	XP-V831 AEZ1LC	XP-V831 AEZ1GC	XP-V831 AEZ1BGLC	XP-V831 AK1SC	XP-V835 AEZ1SC	XP-V835 AEZ1LC	
	O	MC1007	8C-HC7-203-010	PLATE,LCD	a	b	c	
	O	MC1007	8C-HC7-213-010	PLATE,LCD HI	.	.	.	d	e	f	g	h	i	j	
	O	MC1008	88-HC6-021-010	FOOT,	a	b	c	d	e	f	g	h	i	j	
	O	MC1009	8C-HC7-216-010	BATT SPRING (+/-)	a	b	c	d	e	f	g	h	i	j	
	O	MC1010	8C-HC7-002-010	CABI,CENTER	a	b	c	d	e	f	g	h	i	j	
	O	MC1010	8C-HC7-100-010	CABI,CENTER(B)	
	O	MC1011	8C-HC7-010-010	KNOB,SL HOLD	a	b	c	d	e	f	.	h	i	j	
	O	MC1012	8C-HC7-008-010	KNOB,VOLUME	a	b	c	d	e	f	g	h	i	j	
	O	MC1012	8C-HC7-113-010	KNOB,VOLUME (B)	j	
	O	MC1013	8C-HC7-009-010	KNOB,SL OPEN	a	b	c	d	e	f	g	h	i	j	
	O	MC1013	8C-HC7-111-010	KNOB,SL OPEN (B)	
	O	MC1014	8C-HC7-202-010	SPR,SL OPEN	a	b	c	d	e	f	g	h	i	j	
	O	MC1015	SB-HC7-230-010	CUSH,CD MECHA	a	b	c	d	e	f	g	h	i	j	
	O	MC1016	M8-CZK-190-070	KSM-780ATA	a	b	c	d	e	f	g	h	i	j	
	O	MC1017	8C-HC7-204-010	BATT SPRING (+)	a	b	c	d	e	f	g	h	i	j	
	O	MC1018	8C-HC7-205-010	BATT SPRING (-)	a	b	c	d	e	f	g	h	i	j	
	O	MC1019	8C-HC7-201-010	SPR,LID	a	b	c	
	O	MC1019	SC-HC7-370-000	SPR-T,LID	.	.	.	d	e	f	g	h	i	j	
	X	MC1020	8C-HC7-603-110	PCB,CHC7-02-01	a	b	c	d	e	f	g	h	i	j	
	O	MC1021	8C-HC7-003-010	CABI,BOTTOM	a	b	c	d	e	f	g	h	i	j	
					XP-V730 Y1SC	XP-V730 Y1BRC	XP-V737 AEZ1SC	XP-V831 AEZ1SC	XP-V831 AEZ1LC	XP-V831 AEZ1GC	XP-V831 AEZ1BGLC	XP-V831 AK1SC	XP-V835 AEZ1SC	XP-V835 AEZ1LC	
	O	MC1021	8C-HC7-021-010	CABI,BOTTOM(STB)	
	O	MC1022	8C-HC7-004-010	LID,BATT	a	b	c	d	e	f	g	h	i	j	
	O	MC1022	8C-HC7-022-010	LID,BATT(STB)	
	O	MC1023	8C-HC7-033-010	LID,PANEL	.	.	.	d	e	f	g	h	i	j	
	O	MC1A	S0-201-410-310	SCREW,1.4-3	a	b	c	d	e	f	g	h	i	j	
	O	MC1B	S0-201-730-710	SCREW,1.7-7 BLK	a	b	c	d	e	f	g	h	i	j	

MECHANICAL PARTS LIST -2/2

! =  SAFETY PARTS
C = Components marked

All components used on this model at the production line are shown in this service manual.
However, please note that not all components will be available as spare parts for after-sales service.
Components marked S and O are designated as spare parts for service and will be stocked at the spare parts centers.
Components marked X and R are not designated as spare parts for after sales service, and will not be stocked at the spare parts centers.

UNIT-NAME	! C	REF-NO	PARTS-NO	PARTS-NAME	SUFFIX&MODEL	
					XP-V835 AEZ1BBC	XP-V835 AK1SC
	O	MC1001	8C-HC7-005-010	WINDOW, CD PLATE	.	.
	O	MC1001	8C-HC7-032-010	LID, WINDOW	k	1
	O	MC1001	8C-HC7-010-110	KNOB, SL HOLD	.	.
	O	MC1001	8C-HC7-112-010	KNOB, SL HOLD (B)	k	.
	O	MC1002	8C-HC7-027-010	LID, CD (730)	.	.
	O	MC1002	8C-HC7-141-010	LID, CD (730R)	.	.
	O	MC1002	8C-HC7-139-010	LID, CD (737)	.	.
	O	MC1002	8C-HC7-035-010	LID, CD (831)	.	.
	O	MC1002	8C-HC7-060-010	LID, CD (831L)	.	.
	O	MC1002	8C-HC7-061-010	LID, CD (831G)	.	.
	O	MC1002	8C-HC7-125-010	LID, CD (831GL)	.	.
	O	MC1002	8C-HC7-041-010	LID, CD (835)	.	1
	O	MC1002	8C-HC7-059-010	LID, CD (835L)	.	.
	O	MC1002	8C-HC7-133-010	LID, CD (835, HI, B)	k	.
	O	MC1003	S0-090-230-000	LCD-P-06D-25x23.5SM&&&P G9023	k	1
	O	MC1004	S0-524-021-500	ZEBRA CONNECTOR 24.8x2.3x1.5m	k	1
	O	MC1005	8C-HC7-007-010	KNOB, PLAY	.	.
	O	MC1005	8C-HC7-031-010	KEY, MAIN	k	1
	O	MC1006	8C-HC7-602-010	FLEX PWB ASSY	.	.
	O	MC1006	8C-HC7-604-010	MEMBRANCE SW MC-A1-A32 R45036	k	1
					XP-V835 AEZ1BBC	XP-V835 AK1SC
	O	MC1007	8C-HC7-203-010	PLATE, LCD	.	.
	O	MC1007	8C-HC7-213-010	PLATE, LCD HI	k	1
	O	MC1008	88-HC6-021-010	FOOT,	k	1
	O	MC1009	8C-HC7-216-010	BATT SPRING (+/-)	k	1
	O	MC1010	8C-HC7-002-010	CABI, CENTER	.	1
	O	MC1010	8C-HC7-100-010	CABI, CENTER (B)	k	.
	O	MC1011	8C-HC7-010-010	KNOB, SL HOLD	.	1
	O	MC1012	8C-HC7-008-010	KNOB, VOLUME	.	1
	O	MC1012	8C-HC7-113-010	KNOB, VOLUME (B)	k	.
	O	MC1013	8C-HC7-009-010	KNOB, SL OPEN	.	1
	O	MC1013	8C-HC7-111-010	KNOB, SL OPEN (B)	k	.
	O	MC1014	8C-HC7-202-010	SPR, SL OPEN	k	1
	O	MC1015	SB-HC7-230-010	CUSH, CD MECHA	k	1
	O	MC1016	M8-CZK-190-070	KSM-780ATA	k	1
	O	MC1017	8C-HC7-204-010	BATT SPRING (+)	k	1
	O	MC1018	8C-HC7-205-010	BATT SPRING (-)	k	1
	O	MC1019	8C-HC7-201-010	SPR, LID	.	.
	O	MC1019	SC-HC7-370-000	SPR-T, LID	k	1
	X	MC1020	8C-HC7-603-110	PCB, CHC7-02-01	k	1
	O	MC1021	8C-HC7-003-010	CABI, BOTTOM	.	1
					XP-V835 AEZ1BBC	XP-V835 AK1SC
	O	MC1021	8C-HC7-021-010	CABI, BOTTOM (STB)	k	.
	O	MC1022	8C-HC7-004-010	LID, BATT	.	1
	O	MC1022	8C-HC7-022-010	LID, BATT (STB)	k	.
	O	MC1023	8C-HC7-033-010	LID, PANEL	k	1
	O	MC1A	S0-201-410-310	SCREW, 1.4-3	k	1
	O	MC1B	S0-201-730-710	SCREW, 1.7-7 BLK	k	1

COLOR NAME TABLE -1/1

Basic color symbol	Color	Basic color symbol	Color	Basic color symbol	Color
B	Black	C	Cream	D	Orange
G	Green	H	Gray	L	Blue
LT	Transparent Blue	N	Gold	P	Pink
R	Red	S	Silver	ST	Titan Silver
T	Brown	V	Violet	W	White
WT	Transparent White	Y	Yellow	YT	Transparent Yellow
LM	Metallic Blue	LL	Light Blue	GT	Transparent Green
LD	Dark Blue	DT	Transparent Orange	GM	Metallic Green
YM	Metallic Yellow	DM	Metallic Orange	PT	Transparent Pink
LA	Aqua Blue	GL	Light Green	HT	Transparent Gray
HM	Metallic Gray	NH	Champagne Gold	M	Wood Pattern

OTHER PARTS LIST -1/2

!

= ⚠ SAFTY PARTS

C

= Components marked

All components used on this model at the production line are shown in this service manual.

However, please note that not all components will be available as spare parts for after-sales service.

Components marked S and O are designated as spare parts for service and will be stocked at the spare parts centers.

Components marked X and R are not designated as spare parts for after sales service, and will not be stocked at the spare parts centers.

UNIT-NAME	! C	REF-NO	PARTS-NO	PARTS-NAME	SUFFIX&MODEL										
					XP-V730 Y1SC	XP-V730 Y1BRC	XP-V737 AEZ1SC	XP-V831 AEZ1SC	XP-V831 AEZ1LC	XP-V831 AEZ1GC	XP-V831 AEZ1BGLC	XP-V831 AK1SC	XP-V835 AEZ1SC	XP-V835 AEZ1LC	
	X		S8-120-700-090	JP WIRE 70MM (BLK)	a	b	c	d	e	f	g	h	i	j	
	X		87-B50-078-010	FACILITY LIST (S)-0007	a	b	c	d	e	f	g	h	i	j	
	X		87-B40-281-010	LBL,BAR CODE (A-35-8)	a	b	c	d	e	f	g	h	i	j	
	X		87-B40-154-010	LBL,BAR CODE (CU)	a	b	c	.	e	f	g	h	i	j	
	X		8C-HC7-973-010	LBL,POP (731AC)	a	b	c	
	X		8C-HC7-136-010	LBL,SPEC (730EZ)	a	b	
	X		S0-900-900-000	BAG,PE POLY 0.045-9-9	a	.	c	d	e	f	.	h	i	j	
	X		8C-HC7-593-010	CTN (730Y1S)	a	
	X		8C-HC7-592-010	G/B (730Y1S)	a	
	X		8C-HC7-567-010	CARD,CORRUGATE (10)	.	b	g	.	.	.	
	X		87-056-168-010	INFORMATION WARRANTY SHEET	.	b	c	d	e	f	g	h	i	j	
	X		8C-HC7-899-010	BLISTER,BOTTOM (831ALH1B	.	b	g	.	.	.	
	X		8C-HC7-566-010	CARD,CORRUGATE (9)	.	b	g	.	.	.	
	X		8C-HC7-594-010	BLISTER CARD (730YZ1BS)	.	b	
	X		8C-HC7-522-010	BLISTER, TOP (731AEZ1B)	.	b	
	X		8C-HC7-408-010	CTN (730Y1BR)	.	b	
	X		S7-238-831-000	LBL,COLOR (RED)	.	b	
	X		8C-HC7-591-010	CTN (AEZ1S)	.	.	c	
	X		8C-HC7-590-010	G/B (737AEZ1S)	.	.	c	
	X		8C-HC7-137-010	LBL,SPEC (737EZ)	.	.	c	
					XP-V730 Y1SC	XP-V730 Y1BRC	XP-V737 AEZ1SC	XP-V831 AEZ1SC	XP-V831 AEZ1LC	XP-V831 AEZ1GC	XP-V831 AEZ1BGLC	XP-V831 AK1SC	XP-V835 AEZ1SC	XP-V835 AEZ1LC	
	X		SC-HC7-420-000	FELT,20x2x0.3MM BLK	.	.	.	d	e	f	g	h	i	j	
	X		8C-HC7-988-010	LBL,POP (835AHK2)	.	.	.	d	e	f	g	h	i	j	
	X		8C-HC7-094-010	LBL,SPEC (831, EZ)	.	.	.	d	e	f	g	.	.	.	
	X		8C-HC7-881-010	G/B (831AEZ1S)	.	.	.	d	e	f	.	h	.	.	
	X		8C-HC7-883-010	CTN (831AEZ1S)	.	.	.	d	
	X		87-056-868-010	LBL,COLOR BLUE	e	j	
	X		8C-HC7-549-010	CTN (831AEZ1L)	e	
	X		8C-HC7-550-010	CTN (831AEZ1G)	f	
	X		87-056-875-010	LBL,COLOR (GRN)	f	
	X		8C-HC7-898-010	BLISTER, TOP (831ALH1B)	g	.	.	.	
	X		8C-HC7-409-010	CARD,CORRUGATED (PAD B)	g	.	.	.	
	X		S0-650-904-300	BAG,POL S:6.5" x9"	g	.	.	.	
	X		8C-HC7-517-010	BLISTER CARD (831AEZ1BS)	g	.	.	.	
	X		8C-HC7-568-010	CTN (831AEZ1BGL)	g	.	.	.	
	X		87-B70-370-010	LBL,COLOR (LIGHT GREEN)	g	.	.	.	
	X		87-056-876-010	LBL,DIFFERENCE<AK1>	
	X		8C-HC7-884-010	CTN (831AK1S)	h	.	.	
	X		8C-HC7-076-010	LBL,SPEC (831, K)	h	.	.	
	X		8C-HC7-082-010	LBL,SPEC (835, EZ)	i	j	
	X		8C-HC7-873-010	G/B (V835AEZ1S)	i	j	
					XP-V730 Y1SC	XP-V730 Y1BRC	XP-V737 AEZ1SC	XP-V831 AEZ1SC	XP-V831 AEZ1LC	XP-V831 AEZ1GC	XP-V831 AEZ1BGLC	XP-V831 AK1SC	XP-V835 AEZ1SC	XP-V835 AEZ1LC	
	X		8C-HC7-876-010	CTN (835AEZ1S)	i	.	
	X		8C-HC7-548-010	CTN (835AEZ1L)	j	
	X		8C-HC7-516-010	BLISTER CARD (835AEZ1BS)	
	X		8C-HC7-410-010	CARD,CORRUGATED (SLEEVE A	
	X		8C-HC7-583-010	CTN (835AEZ1BB)	
	X		87-056-755-010	LBL,COLOR (BLK)	
	X		8C-HC7-877-010	CTN (835AK1S)	
	X		8C-HC7-083-010	LBL,SPEC (835, K)	
	X		SC-HC7-350-000	SH,ADHESIVE	a	b	c	d	e	f	g	h	i	j	
	X		8C-HC7-209-010	SH,WINDOW S	a	b	c	
	X		SC-HC7-280-000	SH,BOTTOM	a	b	c	d	e	f	g	h	i	j	
	X		SC-HC7-290-000	SH,BOTTOM	a	b	c	d	e	f	g	h	i	j	
	X		8C-HC7-206-010	SH,CABI CENTER	a	b	c	d	e	f	g	h	i	j	
	X		SC-HC7-210-000	SH,FLK PET	a	b	c	d	e	f	g	h	i	j	
	X		8C-HC7-208-010	SH,WINDOW L	a	b	c	
	X		S9-990-000-020	SH,FOAM POLYTHENE	.	b	g	.	.	.	
	X		SC-HC7-400-000	CUSH,PAD	.	.	.	d	e	f	g	h	i	j	
	X		SC-HC7-390-000	SH,WINDOW HI	.	.	.	d	e	f	g	h	i	j	

OTHER PARTS LIST -2/2

! =  SAFETY PARTS

C = Components marked

All components used on this model at the production line are shown in this service manual.

However, please note that not all components will be available as spare parts for after-sales service.

Components marked S and O are designated as spare parts for service and will be stocked at the spare parts centers.

Components marked X and R are not designated as spare parts for after sales service, and will not be stocked at the spare parts centers.

UNIT-NAME	! C	REF-NO	PARTS-NO	PARTS-NAME	SUFFIX&MODEL	
					XP-V835 AEZ1BBC	XP-V835 AK1SC
	X		S8-120-700-090	JP WIRE 70MM(BLK)	k	1
	X		87-B50-078-010	FACILITY LIST (S)-0007	k	1
	X		87-B40-281-010	LBL,BAR CODE(A-35-8)	k	1
	X		87-B40-154-010	LBL,BAR CODE(CU)	k	1
	X		8C-HC7-973-010	LBL,POP(731AC)	.	.
	X		8C-HC7-136-010	LBL,SPEC(730EZ)	.	.
	X		S0-900-900-000	BAG,PE POLY 0.045-9-9	.	1
	X		8C-HC7-593-010	CTN(730Y1S)	.	.
	X		8C-HC7-592-010	G/B(730Y1S)	.	.
	X		8C-HC7-567-010	CARD,CORRUGATE(10)	k	.
	X		87-056-168-010	INFORMATION WARRANTY SHEET	k	1
	X		8C-HC7-899-010	BLISTER,BOTTOM(831ALH1B)	k	.
	X		8C-HC7-566-010	CARD,CORRUGATE(9)	k	.
	X		8C-HC7-594-010	BLISTER CARD(730YZ1BS)	.	.
	X		8C-HC7-522-010	BLISTER,TOP(731AEZ1B)	.	.
	X		8C-HC7-408-010	CTN(730Y1BR)	.	.
	X		S7-238-831-000	LBL,COLOR(RED)	.	.
	X		8C-HC7-591-010	CTN(AEZ1S)	.	.
	X		8C-HC7-590-010	G/B(737AEZ1S)	.	.
	X		8C-HC7-137-010	LBL,SPEC(737EZ)	.	.
					XP-V835 AEZ1BBC	XP-V835 AK1SC
	X		SC-HC7-420-000	FELT,20x2x0.3MM BLK	k	1
	X		8C-HC7-988-010	LBL,POP(835AHK2)	k	1
	X		8C-HC7-094-010	LBL,SPEC(831,EZ)	.	.
	X		8C-HC7-881-010	G/B(831AEZ1S)	.	.
	X		8C-HC7-883-010	CTN(831AEZ1S)	.	.
	X		87-056-868-010	LBL,COLOR BLUE	.	.
	X		8C-HC7-549-010	CTN(831AEZ1L)	.	.
	X		8C-HC7-550-010	CTN(831AEZ1G)	.	.
	X		87-056-875-010	LBL,COLOR(GRN)	.	.
	X		8C-HC7-898-010	BLISTER,TOP(831ALH1B)	k	.
	X		8C-HC7-409-010	CARD,CORRUGATED(PAD B)	k	.
	X		S0-650-904-300	BAG,POL S:6.5"x9"	.	.
	X		8C-HC7-517-010	BLISTER CARD(831AEZ1BS)	.	.
	X		8C-HC7-568-010	CTN(831AEZ1BGL)	.	.
	X		87-B70-370-010	LBL,COLOR(LIGHT GREEN)	.	.
	X		87-056-876-010	LBL,DIFFERENCE<AK1>	.	1
	X		8C-HC7-884-010	CTN(831AK1S)	.	.
	X		8C-HC7-076-010	LBL,SPEC(831,K)	.	.
	X		8C-HC7-082-010	LBL,SPEC(835,EZ)	k	.
	X		8C-HC7-873-010	G/B(V835AEZ1S)	.	1
					XP-V835 AEZ1BBC	XP-V835 AK1SC
	X		8C-HC7-876-010	CTN(835AEZ1S)	.	.
	X		8C-HC7-548-010	CTN(835AEZ1L)	.	.
	X		8C-HC7-516-010	BLISTER CARD(835AEZ1BS)	k	.
	X		8C-HC7-410-010	CARD,CORRUGATED(SLEEVE A	k	.
	X		8C-HC7-583-010	CTN(835AEZ1BB)	k	.
	X		87-056-755-010	LBL,COLOR(BLK)	k	.
	X		8C-HC7-877-010	CTN(835AK1S)	.	1
	X		8C-HC7-083-010	LBL,SPEC(835,K)	.	1
	X		SC-HC7-350-000	SH,ADHESIVE	k	1
	X		8C-HC7-209-010	SH,WINDOW S	.	.
	X		SC-HC7-280-000	SH,BOTTOM	k	1
	X		SC-HC7-290-000	SH,BOTTOM	k	1
	X		8C-HC7-206-010	SH,CABI CENTER	k	1
	X		SC-HC7-210-000	SH,FLK PET	k	1
	X		8C-HC7-208-010	SH,WINDOW L	.	.
	X		S9-990-000-020	SH,FOAM POLYTHENE	k	.
	X		SC-HC7-400-000	CUSH,PAD	k	1
	X		SC-HC7-390-000	SH,WINDOW HI	k	1

